

STAU1 Antibody (N-term)
Affinity Purified Rabbit Polyclonal Antibody (Pab)
Catalog # AP18806a**Specification**

STAU1 Antibody (N-term) - Product Information

Application	WB,E
Primary Accession	O95793
Other Accession	NP_059348.2
Reactivity	Human
Host	Rabbit
Clonality	Polyclonal
Isotype	Rabbit IgG
Calculated MW	63182
Antigen Region	27-55

STAU1 Antibody (N-term) - Additional Information**Gene ID** 6780**Other Names**

Double-stranded RNA-binding protein Staufen homolog 1, STAU1, STAU

Target/Specificity

This STAU1 antibody is generated from rabbits immunized with a KLH conjugated synthetic peptide between 27-55 amino acids from the N-terminal region of human STAU1.

Dilution

WB~~1:1000

E~~Use at an assay dependent concentration.

Format

Purified polyclonal antibody supplied in PBS with 0.09% (W/V) sodium azide. This antibody is purified through a protein A column, followed by peptide affinity purification.

Storage

Maintain refrigerated at 2-8°C for up to 2 weeks. For long term storage store at -20°C in small aliquots to prevent freeze-thaw cycles.

Precautions

STAU1 Antibody (N-term) is for research use only and not for use in diagnostic or therapeutic procedures.

STAU1 Antibody (N-term) - Protein Information**Name** STAU1**Synonyms** STAU

Function Binds double-stranded RNA (regardless of the sequence) and tubulin. May play a role in specific positioning of mRNAs at given sites in the cell by cross-linking cytoskeletal and RNA components, and in stimulating their translation at the site.

Cellular Location

Cytoplasm. Rough endoplasmic reticulum. Note=Localizes exclusively with the rough endoplasmic reticulum (RER)

Tissue Location

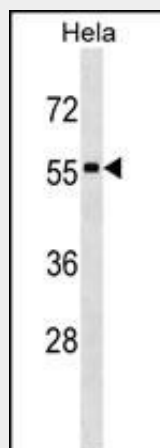
Widely expressed. Expressed in brain, pancreas, heart, skeletal muscles, liver, lung, kidney and placenta

STAU1 Antibody (N-term) - Protocols

Provided below are standard protocols that you may find useful for product applications.

- [Western Blot](#)
- [Blocking Peptides](#)
- [Dot Blot](#)
- [Immunohistochemistry](#)
- [Immunofluorescence](#)
- [Immunoprecipitation](#)
- [Flow Cytometry](#)
- [Cell Culture](#)

STAU1 Antibody (N-term) - Images



STAU1 Antibody (N-term)(Cat. #AP18806a) western blot analysis in HeLa cell line lysates (35ug/lane). This demonstrates the STAU1 antibody detected the STAU1 protein (arrow).

STAU1 Antibody (N-term) - Background

Staufen is a member of the family of double-stranded RNA (dsRNA)-binding proteins involved in the transport and/or localization of mRNAs to different subcellular compartments and/or organelles. These proteins are characterized by the presence of multiple dsRNA-binding domains which are required to bind RNAs having double-stranded secondary structures. The human homologue of staufen encoded by STAU, in addition contains a microtubule-binding domain similar to that of microtubule-associated protein

1B, and binds tubulin. The STAU gene product has been shown to be present in the cytoplasm in association with the rough endoplasmic reticulum (RER), implicating this protein in the transport of mRNA via the microtubule network to the RER, the site of translation. Five transcript variants resulting from alternative splicing of STAU gene and encoding three isoforms have been described. Three of these variants encode the same isoform, however, differ in their 5'UTR.

STAU1 Antibody (N-term) - References

de Lucas, S., et al. J. Virol. 84(15):7603-7612(2010)
Martel, C., et al. RNA 16(3):585-597(2010)
Abrahamyan, L.G., et al. J. Cell. Sci. 123 (PT 3), 369-383 (2010) :
Milev, M.P., et al. Retrovirology 7, 41 (2010) :
Weidensdorfer, D., et al. RNA 15(1):104-115(2009)