

PPP1R9A Antibody (Center)
Affinity Purified Rabbit Polyclonal Antibody (Pab)
Catalog # AP18808c

Specification

PPP1R9A Antibody (Center) - Product Information

Application	WB,E
Primary Accession	O9ULJ8
Other Accession	NP_060120.2
Reactivity	Human
Host	Rabbit
Clonality	Polyclonal
Isotype	Rabbit IgG
Calculated MW	123342
Antigen Region	455-484

PPP1R9A Antibody (Center) - Additional Information

Gene ID 55607

Other Names

Neurabin-1, Neurabin-I, Neural tissue-specific F-actin-binding protein I, Protein phosphatase 1 regulatory subunit 9A, PPP1R9A, KIAA1222

Target/Specificity

This PPP1R9A antibody is generated from rabbits immunized with a KLH conjugated synthetic peptide between 455-484 amino acids from the Central region of human PPP1R9A.

Dilution

WB~~1:1000

E~~Use at an assay dependent concentration.

Format

Purified polyclonal antibody supplied in PBS with 0.09% (W/V) sodium azide. This antibody is purified through a protein A column, followed by peptide affinity purification.

Storage

Maintain refrigerated at 2-8°C for up to 2 weeks. For long term storage store at -20°C in small aliquots to prevent freeze-thaw cycles.

Precautions

PPP1R9A Antibody (Center) is for research use only and not for use in diagnostic or therapeutic procedures.

PPP1R9A Antibody (Center) - Protein Information

Name PPP1R9A

Synonyms KIAA1222

Function Binds to actin filaments (F-actin) and shows cross-linking activity. Binds along the sides of the F-actin. May be involved in neurite formation. Inhibits protein phosphatase 1-alpha activity (By similarity).

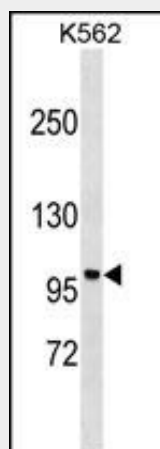
Cellular Location

Cytoplasm, cytoskeleton. Synapse, synaptosome

PPP1R9A Antibody (Center) - Protocols

Provided below are standard protocols that you may find useful for product applications.

- [Western Blot](#)
- [Blocking Peptides](#)
- [Dot Blot](#)
- [Immunohistochemistry](#)
- [Immunofluorescence](#)
- [Immunoprecipitation](#)
- [Flow Cytometry](#)
- [Cell Culture](#)

PPP1R9A Antibody (Center) - Images

PPP1R9A Antibody (Center)(Cat. #AP18808c) western blot analysis in K562 cell line lysates (35ug/lane). This demonstrates the PPP1R9A antibody detected the PPP1R9A protein (arrow).

PPP1R9A Antibody (Center) - Background

This gene is imprinted, and located in a cluster of imprinted genes on chromosome 7q12. This gene is transcribed in both neuronal and multiple embryonic tissues, and it is maternally expressed mainly in embryonic skeletal muscle tissues and biallelically expressed in other embryonic tissues. The protein encoded by this gene includes a PDZ domain and a sterile alpha motif (SAM). It is a regulatory subunit of protein phosphatase I, and controls actin cytoskeleton reorganization. Alternatively spliced transcript variants encoding different isoforms have been found for this gene.

PPP1R9A Antibody (Center) - References

Bailey, S.D., et al. Diabetes Care 33(10):2250-2253(2010)
Suarez-Gestal, M., et al. Arthritis Res. Ther. 12 (2), R72 (2010) :
Talmud, P.J., et al. Am. J. Hum. Genet. 85(5):628-642(2009)
Nakabayashi, K., et al. J. Med. Genet. 41(8):601-608(2004)