

STX4 Antibody (Center)
Affinity Purified Rabbit Polyclonal Antibody (Pab)
Catalog # AP18817c**Specification**

STX4 Antibody (Center) - Product Information

Application	WB,E
Primary Accession	Q12846
Other Accession	Q08850 , P70452 , Q3SWZ3 , NP_004595.2
Reactivity	Human
Predicted	Bovine, Mouse, Rat
Host	Rabbit
Clonality	Polyclonal
Isotype	Rabbit IgG
Calculated MW	34180
Antigen Region	132-160

STX4 Antibody (Center) - Additional Information**Gene ID** 6810**Other Names**

Syntaxin-4, Renal carcinoma antigen NY-REN-31, STX4, STX4A

Target/Specificity

This STX4 antibody is generated from rabbits immunized with a KLH conjugated synthetic peptide between 132-160 amino acids from the Central region of human STX4.

Dilution

WB~~1:1000

E~~Use at an assay dependent concentration.

Format

Purified polyclonal antibody supplied in PBS with 0.09% (W/V) sodium azide. This antibody is purified through a protein A column, followed by peptide affinity purification.

Storage

Maintain refrigerated at 2-8°C for up to 2 weeks. For long term storage store at -20°C in small aliquots to prevent freeze-thaw cycles.

Precautions

STX4 Antibody (Center) is for research use only and not for use in diagnostic or therapeutic procedures.

STX4 Antibody (Center) - Protein Information**Name** STX4

Synonyms STX4A

Function Plasma membrane t-SNARE that mediates docking of transport vesicles (By similarity). Necessary for the translocation of SLC2A4 from intracellular vesicles to the plasma membrane (By similarity). In neurons, recruited at neurite tips to membrane domains rich in the phospholipid 1-oleoyl-2-palmitoyl-PC (OPPC) which promotes neurite tip surface expression of the dopamine transporter SLC6A3/DAT by facilitating fusion of SLC6A3-containing transport vesicles with the plasma membrane (By similarity). Together with STXB3 and VAMP2, may also play a role in docking/fusion of intracellular GLUT4-containing vesicles with the cell surface in adipocytes and in docking of synaptic vesicles at presynaptic active zones (By similarity). Required for normal hearing (PubMed:[36355422](#)).

Cellular Location

Cell membrane {ECO:0000250|UniProtKB:Q08850}; Single-pass type IV membrane protein. Cell projection, neuron projection {ECO:0000250|UniProtKB:Q08850}. Cell projection, stereocilium {ECO:0000250|UniProtKB:P70452}. Note=Localizes to neurite tips in neuronal cells. {ECO:0000250|UniProtKB:Q08850}

Tissue Location

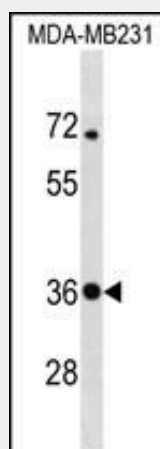
Expressed in neutrophils and neutrophil- differentiated HL-60 cells. Expression in neutrophils increases with differentiation.

STX4 Antibody (Center) - Protocols

Provided below are standard protocols that you may find useful for product applications.

- [Western Blot](#)
- [Blocking Peptides](#)
- [Dot Blot](#)
- [Immunohistochemistry](#)
- [Immunofluorescence](#)
- [Immunoprecipitation](#)
- [Flow Cytometry](#)
- [Cell Culture](#)

STX4 Antibody (Center) - Images



STX4 Antibody (Center)(Cat. #AP18817c) western blot analysis in MDA-MB231 cell line lysates (35ug/lane). This demonstrates the STX4 antibody detected the STX4 protein (arrow).

STX4 Antibody (Center) - Background

Plasma membrane t-SNARE that mediates docking of transport vesicles. Necessary for the translocation of SLC2A4 from intracellular vesicles to the plasma membrane. Together with STXB3 and VAMP2, may also play a role in docking/fusion of intracellular GLUT4-containing vesicles with the cell surface in adipocytes (By similarity). May also play a role in docking of synaptic vesicles at presynaptic active zones.

STX4 Antibody (Center) - References

Evesson, F.J., et al. J. Biol. Chem. 285(37):28529-28539(2010)
Kennedy, M.J., et al. Cell 141(3):524-535(2010)
Brochetta, C., et al. Biochim. Biophys. Acta 1783(10):1781-1791(2008)
Cooper, G.M., et al. Blood 112(4):1022-1027(2008)
Low, S.H., et al. Mol. Biol. Cell 17(2):977-989(2006)