

**SKAP1 Antibody (C-term)**  
**Affinity Purified Rabbit Polyclonal Antibody (Pab)**  
**Catalog # AP18824b****Specification**

---

**SKAP1 Antibody (C-term) - Product Information**

Application	WB,E
Primary Accession	<a href="#">Q86WV1</a>
Other Accession	<a href="#">NP_003717.3</a>
Reactivity	Human
Host	Rabbit
Clonality	Polyclonal
Isotype	Rabbit IgG
Calculated MW	41432
Antigen Region	266-295

**SKAP1 Antibody (C-term) - Additional Information****Gene ID** 8631**Other Names**

Src kinase-associated phosphoprotein 1, Src family-associated phosphoprotein 1, Src kinase-associated phosphoprotein of 55 kDa, SKAP-55, pp55, SKAP1, SCAP1, SKAP55

**Target/Specificity**

This SKAP1 antibody is generated from rabbits immunized with a KLH conjugated synthetic peptide between 266-295 amino acids from the C-terminal region of human SKAP1.

**Dilution**

WB~~1:1000

E~~Use at an assay dependent concentration.

**Format**

Purified polyclonal antibody supplied in PBS with 0.09% (W/V) sodium azide. This antibody is purified through a protein A column, followed by peptide affinity purification.

**Storage**

Maintain refrigerated at 2-8°C for up to 2 weeks. For long term storage store at -20°C in small aliquots to prevent freeze-thaw cycles.

**Precautions**

SKAP1 Antibody (C-term) is for research use only and not for use in diagnostic or therapeutic procedures.

**SKAP1 Antibody (C-term) - Protein Information****Name** SKAP1

**Synonyms** SCAP1, SKAP55

**Function** Positively regulates T-cell receptor signaling by enhancing the MAP kinase pathway. Required for optimal conjugation between T- cells and antigen-presenting cells by promoting the clustering of integrin ITGAL on the surface of T-cells. May be involved in high affinity immunoglobulin epsilon receptor signaling in mast cells.

**Cellular Location**

Cytoplasm. Nucleus. Cell membrane. Note=Upon T- cell stimulation, translocates to lipid rafts at the cell membrane

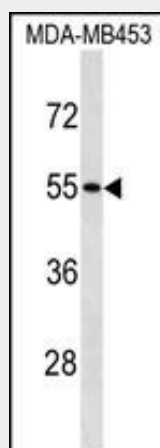
**Tissue Location**

Highly expressed in thymocytes and peripheral blood lymphocytes. Also expressed in spleen cells and testis. Present in T- cells (at protein level).

**SKAP1 Antibody (C-term) - Protocols**

Provided below are standard protocols that you may find useful for product applications.

- [Western Blot](#)
- [Blocking Peptides](#)
- [Dot Blot](#)
- [Immunohistochemistry](#)
- [Immunofluorescence](#)
- [Immunoprecipitation](#)
- [Flow Cytometry](#)
- [Cell Culture](#)

**SKAP1 Antibody (C-term) - Images**

SKAP1 Antibody (C-term)(Cat. #AP18824b) western blot analysis in MDA-MB453 cell line lysates (35ug/lane). This demonstrates the SKAP1 antibody detected the SKAP1 protein (arrow).

**SKAP1 Antibody (C-term) - Background**

This gene encodes a T cell adaptor protein, a class of intracellular molecules with modular domains capable of recruiting additional proteins but that exhibit no intrinsic enzymatic activity. The encoded protein contains a unique N-terminal region followed by a PH domain and C-terminal SH3 domain. Along with the

adhesion and degranulation-promoting adaptor protein, the encoded protein plays a critical role in inside-out signaling by coupling T-cell antigen receptor stimulation to the activation of integrins.

#### **SKAP1 Antibody (C-term) - References**

Goode, E.L., et al. Nat. Genet. 42(10):874-879(2010)  
Rose, J.E., et al. Mol. Med. 16 (7-8), 247-253 (2010) :  
Raab, M., et al. Immunity 32(4):541-556(2010)  
Lehmann, R., et al. Proteomics 9(23):5288-5295(2009)  
Fang, L., et al. Cell Cycle 8(17):2819-2827(2009)