

API5 Antibody (C-term)
Affinity Purified Rabbit Polyclonal Antibody (Pab)
Catalog # AP18825b**Specification**

API5 Antibody (C-term) - Product Information

Application	WB,E
Primary Accession	O9BZZ5
Other Accession	NP_006586.1
Reactivity	Human
Host	Rabbit
Clonality	Polyclonal
Isotype	Rabbit IgG
Calculated MW	59005
Antigen Region	482-510

API5 Antibody (C-term) - Additional Information**Gene ID** 8539**Other Names**

Apoptosis inhibitor 5, API-5, Antiapoptosis clone 11 protein, AAC-11, Cell migration-inducing gene 8 protein, Fibroblast growth factor 2-interacting factor, FIF, Protein XAGL, API5

Target/Specificity

This API5 antibody is generated from rabbits immunized with a KLH conjugated synthetic peptide between 482-510 amino acids from the C-terminal region of human API5.

Dilution

WB~~1:1000

Format

Purified polyclonal antibody supplied in PBS with 0.09% (W/V) sodium azide. This antibody is purified through a protein A column, followed by peptide affinity purification.

Storage

Maintain refrigerated at 2-8°C for up to 2 weeks. For long term storage store at -20°C in small aliquots to prevent freeze-thaw cycles.

Precautions

API5 Antibody (C-term) is for research use only and not for use in diagnostic or therapeutic procedures.

API5 Antibody (C-term) - Protein Information**Name** API5 ([HGNC:594](#))**Function** Antiapoptotic factor that may have a role in protein assembly. Negatively regulates

ACIN1. By binding to ACIN1, it suppresses ACIN1 cleavage from CASP3 and ACIN1-mediated DNA fragmentation. Also known to efficiently suppress E2F1-induced apoptosis. Its depletion enhances the cytotoxic action of the chemotherapeutic drugs.

Cellular Location

Nucleus. Cytoplasm. Note=Mainly nuclear. Can also be cytoplasmic

Tissue Location

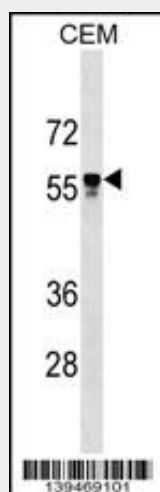
Expressed in all tissues tested, including heart, brain, placenta, lung, liver, skeletal muscle, kidney and pancreas Highest levels in heart, pancreas and placenta. Highly expressed in several cancers. Preferentially expressed in squamous cell carcinoma versus adenocarcinoma in non-small cell lung cancer

API5 Antibody (C-term) - Protocols

Provided below are standard protocols that you may find useful for product applications.

- [Western Blot](#)
- [Blocking Peptides](#)
- [Dot Blot](#)
- [Immunohistochemistry](#)
- [Immunofluorescence](#)
- [Immunoprecipitation](#)
- [Flow Cytometry](#)
- [Cell Culture](#)

API5 Antibody (C-term) - Images



API5 Antibody (C-term)(Cat. #AP18825b) western blot analysis in CEM cell line lysates (35ug/lane). This demonstrates the API5 antibody detected the API5 protein (arrow).

API5 Antibody (C-term) - Background

Antiapoptotic factor that may have a role in protein assembly. Negatively regulates ACIN1. By binding to ACIN1, it suppresses ACIN1 cleavage from CASP3 and ACIN1-mediated DNA fragmentation. Also known to efficiently suppress E2F1-induced apoptosis. Its depletion enhances the cytotoxic action of the chemotherapeutic drugs.

API5 Antibody (C-term) - References

Wang, Z., et al. Med. Sci. Monit. 16 (8), CR357-CR364 (2010) :
Ren, K., et al. Pathol. Oncol. Res. 16(2):229-237(2010)
Need, A.C., et al. Hum. Mol. Genet. 18(23):4650-4661(2009)
Rigou, P., et al. EMBO J. 28(11):1576-1588(2009)
Wang, Y., et al. J. Biol. Chem. 283(19):13205-13215(2008)