

FRS2 Antibody (Center)
Affinity Purified Rabbit Polyclonal Antibody (Pab)
Catalog # AP18833c**Specification**

FRS2 Antibody (Center) - Product Information

Application	WB,E
Primary Accession	O8WU20
Other Accession	NP_006645.3
Reactivity	Human
Host	Rabbit
Clonality	Polyclonal
Isotype	Rabbit IgG
Calculated MW	57029
Antigen Region	275-303

FRS2 Antibody (Center) - Additional Information**Gene ID** 10818**Other Names**

Fibroblast growth factor receptor substrate 2, FGFR substrate 2, FGFR-signaling adaptor SNT, Suc1-associated neurotrophic factor target 1, SNT-1, FRS2

Target/Specificity

This FRS2 antibody is generated from rabbits immunized with a KLH conjugated synthetic peptide between 275-303 amino acids from the Central region of human FRS2.

Dilution

WB~~1:1000

E~~Use at an assay dependent concentration.

Format

Purified polyclonal antibody supplied in PBS with 0.09% (W/V) sodium azide. This antibody is purified through a protein A column, followed by peptide affinity purification.

Storage

Maintain refrigerated at 2-8°C for up to 2 weeks. For long term storage store at -20°C in small aliquots to prevent freeze-thaw cycles.

Precautions

FRS2 Antibody (Center) is for research use only and not for use in diagnostic or therapeutic procedures.

FRS2 Antibody (Center) - Protein Information**Name** FRS2

Function Adapter protein that links activated FGR and NGF receptors to downstream signaling pathways. Plays an important role in the activation of MAP kinases and in the phosphorylation of PIK3R1, the regulatory subunit of phosphatidylinositol 3-kinase, in response to ligand-mediated activation of FGFR1. Modulates signaling via SHC1 by competing for a common binding site on NTRK1.

Cellular Location

Endomembrane system. Note=Cytoplasmic, membrane- bound

Tissue Location

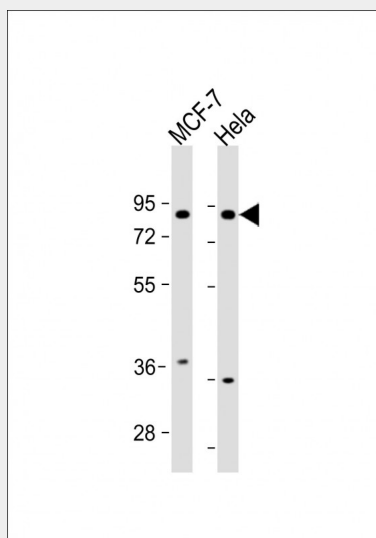
Highly expressed in heart, brain, spleen, lung, liver, skeletal muscle, kidney and testis

FRS2 Antibody (Center) - Protocols

Provided below are standard protocols that you may find useful for product applications.

- [Western Blot](#)
- [Blocking Peptides](#)
- [Dot Blot](#)
- [Immunohistochemistry](#)
- [Immunofluorescence](#)
- [Immunoprecipitation](#)
- [Flow Cytometry](#)
- [Cell Culture](#)

FRS2 Antibody (Center) - Images



All lanes : Anti-FRS2 Antibody (Center) at 1:1000 dilution Lane 1: MCF-7 whole cell lysate Lane 2: HeLa whole cell lysate Lysates/proteins at 20 µg per lane. Secondary Goat Anti-Rabbit IgG, (H+L), Peroxidase conjugated at 1/10000 dilution. Predicted band size : 57 kDa Blocking/Dilution buffer: 5% NFD/MTBST.

FRS2 Antibody (Center) - Background

Adapter protein that links FGR and NGF receptors to downstream signaling pathways. Involved in the activation of MAP kinases. Modulates signaling via SHC1 by competing for a common binding site on NTRK1.

FRS2 Antibody (Center) - References

Zhou, W., et al. Cell Res. 19(10):1165-1177(2009)
Cha, J.Y., et al. J. Biol. Chem. 284(10):6227-6240(2009)
Li, M., et al. J. Dermatol. Sci. 53(3):182-191(2009)
Turner, S.T., et al. Hypertension 52(2):359-365(2008)
Gudbjartsson, D.F., et al. Nat. Genet. 40(5):609-615(2008)