

**KRT31 Antibody (N-term)**  
**Affinity Purified Rabbit Polyclonal Antibody (Pab)**  
**Catalog # AP18844A****Specification**

---

**KRT31 Antibody (N-term) - Product Information**

Application	WB,E
Primary Accession	<a href="#">Q15323</a>
Other Accession	<a href="#">Q14525</a> , <a href="#">O76009</a> , <a href="#">NP_002268.2</a>
Reactivity	Human
Host	Rabbit
Clonality	Polyclonal
Isotype	Rabbit IgG
Calculated MW	47237
Antigen Region	60-89

**KRT31 Antibody (N-term) - Additional Information****Gene ID** 3881**Other Names**

Keratin, type I cuticular Ha1, Hair keratin, type I Ha1, Keratin-31, K31, KRT31, HHA1, HKA1, KRTHA1

**Target/Specificity**

This KRT31 antibody is generated from rabbits immunized with a KLH conjugated synthetic peptide between 60-89 amino acids from the N-terminal region of human KRT31.

**Dilution**

WB~~1:1000

E~~Use at an assay dependent concentration.

**Format**

Purified polyclonal antibody supplied in PBS with 0.09% (W/V) sodium azide. This antibody is purified through a protein A column, followed by peptide affinity purification.

**Storage**

Maintain refrigerated at 2-8°C for up to 2 weeks. For long term storage store at -20°C in small aliquots to prevent freeze-thaw cycles.

**Precautions**

KRT31 Antibody (N-term) is for research use only and not for use in diagnostic or therapeutic procedures.

**KRT31 Antibody (N-term) - Protein Information****Name** KRT31

**Synonyms** HHA1, HKA1, KRTHA1

**Tissue Location**

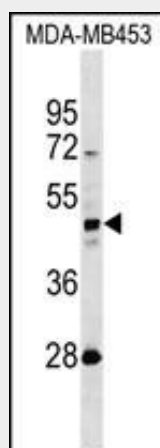
Present in scalp but not in hairless skin. Abundantly expressed in the differentiating cortex of growing (anagen) hair. Expression is restricted to the keratinocytes of the hair cortex and is absent from inner root sheath and medulla

**KRT31 Antibody (N-term) - Protocols**

Provided below are standard protocols that you may find useful for product applications.

- [Western Blot](#)
- [Blocking Peptides](#)
- [Dot Blot](#)
- [Immunohistochemistry](#)
- [Immunofluorescence](#)
- [Immunoprecipitation](#)
- [Flow Cytometry](#)
- [Cell Culture](#)

**KRT31 Antibody (N-term) - Images**



KRT31 Antibody (N-term)(Cat. #AP18844a) western blot analysis in MDA-MB453 cell line lysates (35ug/lane). This demonstrates the KRT31 antibody detected the KRT31 protein (arrow).

**KRT31 Antibody (N-term) - Background**

The protein encoded by this gene is a member of the keratin gene family. As a type I hair keratin, it is an acidic protein which heterodimerizes with type II keratins to form hair and nails. The type I hair keratins are clustered in a region of chromosome 17q12-q21 and have the same direction of transcription.

**KRT31 Antibody (N-term) - References**

Ewing, R.M., et al. Mol. Syst. Biol. 3, 89 (2007) :  
Schweizer, J., et al. J. Cell Biol. 174(2):169-174(2006)  
Lim, J., et al. Cell 125(4):801-814(2006)  
Cribier, B., et al. J. Invest. Dermatol. 122(5):1078-1083(2004)  
Langbein, L., et al. J. Biol. Chem. 274(28):19874-19884(1999)