

**P2RX3 Antibody (C-term)**  
**Affinity Purified Rabbit Polyclonal Antibody (Pab)**  
**Catalog # AP18847b**

**Specification**

---

**P2RX3 Antibody (C-term) - Product Information**

Application	WB,E
Primary Accession	<a href="#">P56373</a>
Other Accession	<a href="#">NP_002550.2</a>
Reactivity	Human
Host	Rabbit
Clonality	Polyclonal
Isotype	Rabbit IgG
Calculated MW	44289
Antigen Region	330-356

**P2RX3 Antibody (C-term) - Additional Information**

**Gene ID** 5024

**Other Names**

P2X purinoceptor 3, P2X3, ATP receptor, Purinergic receptor, P2RX3

**Target/Specificity**

This P2RX3 antibody is generated from rabbits immunized with a KLH conjugated synthetic peptide between 330-356 amino acids from the C-terminal region of human P2RX3.

**Dilution**

WB~~1:1000

E~~Use at an assay dependent concentration.

**Format**

Purified polyclonal antibody supplied in PBS with 0.09% (W/V) sodium azide. This antibody is purified through a protein A column, followed by peptide affinity purification.

**Storage**

Maintain refrigerated at 2-8°C for up to 2 weeks. For long term storage store at -20°C in small aliquots to prevent freeze-thaw cycles.

**Precautions**

P2RX3 Antibody (C-term) is for research use only and not for use in diagnostic or therapeutic procedures.

**P2RX3 Antibody (C-term) - Protein Information**

**Name** P2RX3

**Function** Extracellular ATP-activated non-selective cation channel (PubMed:[10440098](#),

PubMed:[27626375](#), PubMed:[29674445](#), PubMed:[31232692](#)). Plays particularly important role in sensory neurons where its activation is critical for gustatory, nociceptive responses, visceral reflexes and sensory hypersensitization (By similarity).

#### Cellular Location

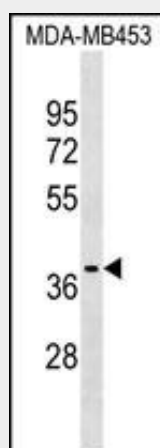
Cell membrane; Multi-pass membrane protein Note=Localizes to neuronal cell body of sensory neurons {ECO:0000250|UniProtKB:P49654}

#### P2RX3 Antibody (C-term) - Protocols

Provided below are standard protocols that you may find useful for product applications.

- [Western Blot](#)
- [Blocking Peptides](#)
- [Dot Blot](#)
- [Immunohistochemistry](#)
- [Immunofluorescence](#)
- [Immunoprecipitation](#)
- [Flow Cytometry](#)
- [Cell Culture](#)

#### P2RX3 Antibody (C-term) - Images



P2RX3 Antibody (C-term)(Cat. #AP18847b) western blot analysis in MDA-MB453 cell line lysates (35ug/lane). This demonstrates the P2RX3 antibody detected the P2RX3 protein (arrow).

#### P2RX3 Antibody (C-term) - Background

The product of this gene belongs to the family of purinoceptors for ATP. This receptor functions as a ligand-gated ion channel and may transduce ATP-evoked nociceptor activation. Mouse studies suggest that this receptor is important for peripheral pain responses, and also participates in pathways controlling urinary bladder volume reflexes. It is possible that the development of selective antagonists for this receptor may have a therapeutic potential in pain relief and in the treatment of disorders of urine storage.

#### P2RX3 Antibody (C-term) - References

Allsopp, R.C., et al. J. Biol. Chem. 285(43):32770-32777(2010)  
Beneng, K., et al. Int J Oral Maxillofac Surg 39(8):815-819(2010)  
Nair, A., et al. Cell. Mol. Neurobiol. 30(4):505-509(2010)  
Jacques-Silva, M.C., et al. Proc. Natl. Acad. Sci. U.S.A. 107(14):6465-6470(2010)  
Varani, K., et al. Cell. Physiol. Biochem. 25 (2-3), 325-336 (2010) :