

PCDHGB4 Antibody (Center)
Affinity Purified Rabbit Polyclonal Antibody (Pab)
Catalog # AP18848c

Specification

PCDHGB4 Antibody (Center) - Product Information

Application	WB,E
Primary Accession	O9UN71
Other Accession	NP_003727.1
Reactivity	Human
Host	Rabbit
Clonality	Polyclonal
Isotype	Rabbit IgG
Calculated MW	99927
Antigen Region	353-379

PCDHGB4 Antibody (Center) - Additional Information

Gene ID 8641

Other Names

Protocadherin gamma-B4, PCDH-gamma-B4, Cadherin-20, Fibroblast cadherin-2, PCDHGB4, CDH20, FIB2

Target/Specificity

This PCDHGB4 antibody is generated from rabbits immunized with a KLH conjugated synthetic peptide between 353-379 amino acids from the Central region of human PCDHGB4.

Dilution

WB~~1:1000

E~~Use at an assay dependent concentration.

Format

Purified polyclonal antibody supplied in PBS with 0.09% (W/V) sodium azide. This antibody is purified through a protein A column, followed by peptide affinity purification.

Storage

Maintain refrigerated at 2-8°C for up to 2 weeks. For long term storage store at -20°C in small aliquots to prevent freeze-thaw cycles.

Precautions

PCDHGB4 Antibody (Center) is for research use only and not for use in diagnostic or therapeutic procedures.

PCDHGB4 Antibody (Center) - Protein Information

Name PCDHGB4

Synonyms CDH20, FIB2

Function Potential calcium-dependent cell-adhesion protein. May be involved in the establishment and maintenance of specific neuronal connections in the brain.

Cellular Location

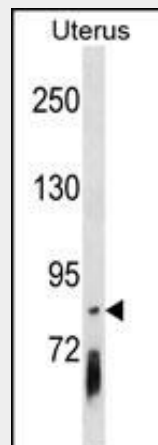
Cell membrane; Single-pass type I membrane protein

PCDHGB4 Antibody (Center) - Protocols

Provided below are standard protocols that you may find useful for product applications.

- [Western Blot](#)
- [Blocking Peptides](#)
- [Dot Blot](#)
- [Immunohistochemistry](#)
- [Immunofluorescence](#)
- [Immunoprecipitation](#)
- [Flow Cytometry](#)
- [Cell Culture](#)

PCDHGB4 Antibody (Center) - Images



PCDHGB4 Antibody (Center)(Cat. #AP18848c) western blot analysis in Uterus tissue lysates (35ug/lane). This demonstrates the PCDHGB4 antibody detected the PCDHGB4 protein (arrow).

PCDHGB4 Antibody (Center) - Background

This gene is a member of the protocadherin gamma gene cluster, one of three related clusters tandemly linked on chromosome five. These gene clusters have an immunoglobulin-like organization, suggesting that a novel mechanism may be involved in their regulation and expression. The gamma gene cluster includes 22 genes divided into 3 subfamilies. Subfamily A contains 12 genes, subfamily B contains 7 genes and 2 pseudogenes, and the more distantly related subfamily C contains 3 genes. The tandem array of 22 large, variable region exons are followed by a constant region, containing 3 exons shared by all genes in the cluster. Each variable region exon encodes the extracellular region, which includes 6 cadherin ectodomains and a transmembrane region. The constant region exons encode the common cytoplasmic region. These neural cadherin-like cell adhesion proteins most likely play a critical role in the establishment and function of specific cell-cell connections in the brain. This particular family member is expressed in fibroblasts and is thought to play a role in wound healing in response to injury. Alternative splicing

has been described for the gamma cluster genes.

PCDHGB4 Antibody (Center) - References

Wu, Q., et al. Genome Res. 11(3):389-404(2001) Nollet, F., et al. J. Mol. Biol. 299(3):551-572(2000)
Yagi, T., et al. Genes Dev. 14(10):1169-1180(2000) Wu, Q., et al. Proc. Natl. Acad. Sci. U.S.A.
97(7):3124-3129(2000) Wu, Q., et al. Cell 97(6):779-790(1999)