

PDLIM3 Antibody (C-term)
Affinity Purified Rabbit Polyclonal Antibody (Pab)
Catalog # AP18851b

Specification

PDLIM3 Antibody (C-term) - Product Information

Application	WB,E
Primary Accession	Q53GG5
Other Accession	NP_001107579.1
Reactivity	Human
Host	Rabbit
Clonality	Polyclonal
Isotype	Rabbit IgG
Calculated MW	39232
Antigen Region	329-355

PDLIM3 Antibody (C-term) - Additional Information

Gene ID 27295

Other Names

PDZ and LIM domain protein 3, Actinin-associated LIM protein, Alpha-actinin-2-associated LIM protein, PDLIM3, ALP

Target/Specificity

This PDLIM3 antibody is generated from rabbits immunized with a KLH conjugated synthetic peptide between 329-355 amino acids from the C-terminal region of human PDLIM3.

Dilution

WB~~1:1000

E~~Use at an assay dependent concentration.

Format

Purified polyclonal antibody supplied in PBS with 0.09% (W/V) sodium azide. This antibody is purified through a protein A column, followed by peptide affinity purification.

Storage

Maintain refrigerated at 2-8°C for up to 2 weeks. For long term storage store at -20°C in small aliquots to prevent freeze-thaw cycles.

Precautions

PDLIM3 Antibody (C-term) is for research use only and not for use in diagnostic or therapeutic procedures.

PDLIM3 Antibody (C-term) - Protein Information

Name PDLIM3

Synonyms ALP

Function May play a role in the organization of actin filament arrays within muscle cells.

Cellular Location

Cytoplasm, myofibril, sarcomere, Z line. Note=Localizes to myofiber Z-lines

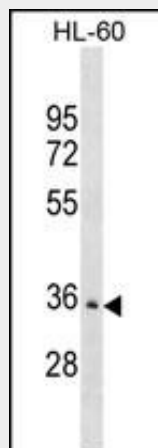
Tissue Location

Isoform 1 is highly expressed in differentiated skeletal muscle. Isoform 2 is heart-specific

PDLIM3 Antibody (C-term) - Protocols

Provided below are standard protocols that you may find useful for product applications.

- [Western Blot](#)
- [Blocking Peptides](#)
- [Dot Blot](#)
- [Immunohistochemistry](#)
- [Immunofluorescence](#)
- [Immunoprecipitation](#)
- [Flow Cytometry](#)
- [Cell Culture](#)

PDLIM3 Antibody (C-term) - Images

PDLIM3 Antibody (C-term)(Cat. #AP18851b) western blot analysis in HL-60 cell line lysates (35ug/lane). This demonstrates the PDLIM3 antibody detected the PDLIM3 protein (arrow).

PDLIM3 Antibody (C-term) - Background

The protein encoded by this gene contains a PDZ domain and a LIM domain, indicating that it may be involved in cytoskeletal assembly. In support of this, the encoded protein has been shown to bind the spectrin-like repeats of alpha-actinin-2 and to colocalize with alpha-actinin-2 at the Z lines of skeletal muscle. This gene is found near a region of chromosome 4 that has been implicated in facioscapulohumeral muscular dystrophy, but this gene does not appear to be involved in the disease. Two transcript variants encoding different isoforms have been found for this gene.

PDLIM3 Antibody (C-term) - References

Hershberger, R.E., et al. Clin Transl Sci 1(1):21-26(2008)
Keira, Y., et al. Neurosci. Res. 57(4):513-521(2007)
Arola, A.M., et al. Mol. Genet. Metab. 90(4):435-440(2007)
Klaavuniemi, T., et al. J. Biol. Chem. 279(25):26402-26410(2004)
Bouju, S., et al. Neuromuscul. Disord. 9(1):3-10(1999)