

PGSF1 Antibody (Center)
Affinity Purified Rabbit Polyclonal Antibody (Pab)
Catalog # AP18854c

Specification

PGSF1 Antibody (Center) - Product Information

Application	WB,E
Primary Accession	Q8N6C7
Reactivity	Human
Host	Rabbit
Clonality	Polyclonal
Isotype	Rabbit IgG
Calculated MW	14321
Antigen Region	26-54

PGSF1 Antibody (Center) - Additional Information

Other Names

Putative uncharacterized protein encoded by MIR7-3HG, Pituitary gland-specific factor 1, MIR7-3HG, C19orf30, LINC00306, NCRNA00306, PGSF1

Target/Specificity

This PGSF1 antibody is generated from rabbits immunized with a KLH conjugated synthetic peptide between 26-54 amino acids from the Central region of human PGSF1.

Dilution

WB~~1:1000

Format

Purified polyclonal antibody supplied in PBS with 0.09% (W/V) sodium azide. This antibody is purified through a protein A column, followed by peptide affinity purification.

Storage

Maintain refrigerated at 2-8°C for up to 2 weeks. For long term storage store at -20°C in small aliquots to prevent freeze-thaw cycles.

Precautions

PGSF1 Antibody (Center) is for research use only and not for use in diagnostic or therapeutic procedures.

PGSF1 Antibody (Center) - Protein Information

Name MIR7-3HG

Synonyms C19orf30, LINC00306, NCRNA00306, PGSF1

Tissue Location

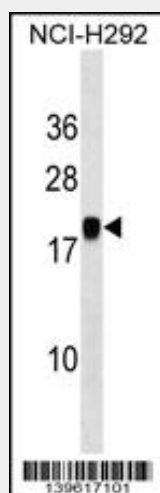
High expression in pituitary gland and weak in pancreas.

PGSF1 Antibody (Center) - Protocols

Provided below are standard protocols that you may find useful for product applications.

- [Western Blot](#)
- [Blocking Peptides](#)
- [Dot Blot](#)
- [Immunohistochemistry](#)
- [Immunofluorescence](#)
- [Immunoprecipitation](#)
- [Flow Cytometry](#)
- [Cell Culture](#)

PGSF1 Antibody (Center) - Images



PGSF1 Antibody (Center)(Cat. #AP18854c) western blot analysis in NCI-H292 cell line lysates (35ug/lane). This demonstrates the PGSF1 antibody detected the PGSF1 protein (arrow).

PGSF1 Antibody (Center) - Background

The function of this protein remains unknown.