

**PLIN3 Antibody (Center)**  
**Affinity Purified Rabbit Polyclonal Antibody (Pab)**  
**Catalog # AP18857c****Specification**

---

**PLIN3 Antibody (Center) - Product Information**

Application	WB,E
Primary Accession	<a href="#">O60664</a>
Other Accession	<a href="#">NP_001157661.1</a>
Reactivity	Human
Host	Rabbit
Clonality	Polyclonal
Isotype	Rabbit IgG
Calculated MW	47075
Antigen Region	230-257

**PLIN3 Antibody (Center) - Additional Information****Gene ID** 10226**Other Names**

Perilipin-3, 47 kDa mannose 6-phosphate receptor-binding protein, 47 kDa MPR-binding protein, Cargo selection protein TIP47, Mannose-6-phosphate receptor-binding protein 1, Placental protein 17, PP17, PLIN3, M6PRBP1, TIP47

**Target/Specificity**

This PLIN3 antibody is generated from rabbits immunized with a KLH conjugated synthetic peptide between 230-257 amino acids from the Central region of human PLIN3.

**Dilution**

WB~~1:1000

E~~Use at an assay dependent concentration.

**Format**

Purified polyclonal antibody supplied in PBS with 0.09% (W/V) sodium azide. This antibody is purified through a protein A column, followed by peptide affinity purification.

**Storage**

Maintain refrigerated at 2-8°C for up to 2 weeks. For long term storage store at -20°C in small aliquots to prevent freeze-thaw cycles.

**Precautions**

PLIN3 Antibody (Center) is for research use only and not for use in diagnostic or therapeutic procedures.

**PLIN3 Antibody (Center) - Protein Information****Name** PLIN3

**Synonyms** M6PRBP1, TIP47 {ECO:0000303|PubMed:95901

**Function** Structural component of lipid droplets, which is required for the formation and maintenance of lipid storage droplets (PubMed:[34077757](#)). Required for the transport of mannose 6-phosphate receptors (MPR) from endosomes to the trans-Golgi network (PubMed:[9590177](#)).

#### Cellular Location

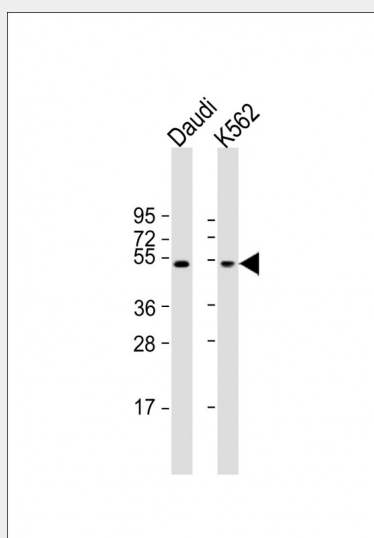
Lipid droplet. Endosome membrane; Peripheral membrane protein; Cytoplasmic side. Cytoplasm. Note=Membrane associated on endosomes (PubMed:15545278). Detected in the envelope and the core of lipid bodies and in lipid sails (PubMed:15545278)

### PLIN3 Antibody (Center) - Protocols

Provided below are standard protocols that you may find useful for product applications.

- [Western Blot](#)
- [Blocking Peptides](#)
- [Dot Blot](#)
- [Immunohistochemistry](#)
- [Immunofluorescence](#)
- [Immunoprecipitation](#)
- [Flow Cytometry](#)
- [Cell Culture](#)

### PLIN3 Antibody (Center) - Images



All lanes : Anti-PLIN3 Antibody (Center) at 1:1000 dilution Lane 1: Daudi whole cell lysate Lane 2: K562 whole cell lysate Lysates/proteins at 20 µg per lane. Secondary Goat Anti-Rabbit IgG, (H+L), Peroxidase conjugated at 1/10000 dilution. Predicted band size : 47 kDa Blocking/Dilution buffer: 5% NFD/MTBST.

### PLIN3 Antibody (Center) - Background

Mannose 6-phosphate receptors (MPRs) deliver lysosomal hydrolase from the Golgi to endosomes and then return to the Golgi complex. The protein encoded by this gene interacts with the cytoplasmic domains of both cation-independent and cation-dependent

MPRs, and is required for endosome-to-Golgi transport. This protein also binds directly to the GTPase RAB9 (RAB9A), a member of the RAS oncogene family. The interaction with RAB9 has been shown to increase the affinity of this protein for its cargo. Multiple transcript variants encoding different isoforms have been found for this gene.

#### **PLIN3 Antibody (Center) - References**

Hocsak, E., et al. FEBS Lett. 584(13):2953-2960(2010)  
Bauby, H., et al. Traffic 11(4):455-467(2010)  
Kimmel, A.R., et al. J. Lipid Res. 51(3):468-471(2010)  
Espinosa, E.J., et al. Cell 137(5):938-948(2009)  
Bulankina, A.V., et al. J. Cell Biol. 185(4):641-655(2009)