

PNMA6A Antibody (N-term)
Affinity Purified Rabbit Polyclonal Antibody (Pab)
Catalog # AP18859a**Specification**

PNMA6A Antibody (N-term) - Product Information

| | |
|-------------------|--|
| Application | WB,E |
| Primary Accession | P0CW24 |
| Other Accession | P0CZ20 , P0CW26 , P0C5W0 |
| Reactivity | Human |
| Host | Rabbit |
| Clonality | Polyclonal |
| Isotype | Rabbit IgG |
| Calculated MW | 43875 |
| Antigen Region | 53-80 |

PNMA6A Antibody (N-term) - Additional Information**Gene ID** 84968**Other Names**

Paraneoplastic antigen-like protein 6A, PNMA6A

Target/Specificity

This PNMA6A antibody is generated from rabbits immunized with a KLH conjugated synthetic peptide between 53-80 amino acids from the N-terminal region of human PNMA6A.

Dilution

WB~~1:1000

Format

Purified polyclonal antibody supplied in PBS with 0.09% (W/V) sodium azide. This antibody is purified through a protein A column, followed by peptide affinity purification.

Storage

Maintain refrigerated at 2-8°C for up to 2 weeks. For long term storage store at -20°C in small aliquots to prevent freeze-thaw cycles.

Precautions

PNMA6A Antibody (N-term) is for research use only and not for use in diagnostic or therapeutic procedures.

PNMA6A Antibody (N-term) - Protein Information**Name** PNMA6A ([HGNC:28248](#))**Tissue Location**

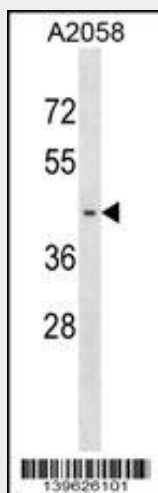
Expressed in the brain.

PNMA6A Antibody (N-term) - Protocols

Provided below are standard protocols that you may find useful for product applications.

- [Western Blot](#)
- [Blocking Peptides](#)
- [Dot Blot](#)
- [Immunohistochemistry](#)
- [Immunofluorescence](#)
- [Immunoprecipitation](#)
- [Flow Cytometry](#)
- [Cell Culture](#)

PNMA6A Antibody (N-term) - Images



PNMA6A Antibody (N-term)(Cat. #AP18859a) western blot analysis in A2058 cell line lysates (35ug/lane). This demonstrates the PNMA6A antibody detected the PNMA6A protein (arrow).

PNMA6A Antibody (N-term) - Background

The function of this protein remains unknown.