

**ART5 Antibody (Center)**  
**Affinity Purified Rabbit Polyclonal Antibody (Pab)**  
**Catalog # AP18878c****Specification**

---

**ART5 Antibody (Center) - Product Information**

Application	WB,E
Primary Accession	<a href="#">O96L15</a>
Other Accession	<a href="#">NP_443750.2</a>
Reactivity	Human
Host	Rabbit
Clonality	Polyclonal
Isotype	Rabbit IgG
Calculated MW	32054
Antigen Region	148-177

**ART5 Antibody (Center) - Additional Information****Gene ID** 116969**Other Names**

Ecto-ADP-ribosyltransferase 5, ADP-ribosyltransferase C2 and C3 toxin-like 5, ARTC5, Mono(ADP-ribosyl)transferase 5, NAD(P)(+)-arginine ADP-ribosyltransferase 5, ART5

**Target/Specificity**

This ART5 antibody is generated from rabbits immunized with a KLH conjugated synthetic peptide between 148-177 amino acids from the Central region of human ART5.

**Dilution**

WB~~1:1000

**Format**

Purified polyclonal antibody supplied in PBS with 0.09% (W/V) sodium azide. This antibody is purified through a protein A column, followed by peptide affinity purification.

**Storage**

Maintain refrigerated at 2-8°C for up to 2 weeks. For long term storage store at -20°C in small aliquots to prevent freeze-thaw cycles.

**Precautions**

ART5 Antibody (Center) is for research use only and not for use in diagnostic or therapeutic procedures.

**ART5 Antibody (Center) - Protein Information****Name** ART5**Cellular Location**

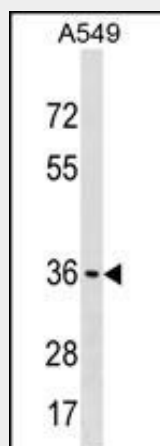
Secreted.

### ART5 Antibody (Center) - Protocols

Provided below are standard protocols that you may find useful for product applications.

- [Western Blot](#)
- [Blocking Peptides](#)
- [Dot Blot](#)
- [Immunohistochemistry](#)
- [Immunofluorescence](#)
- [Immunoprecipitation](#)
- [Flow Cytometry](#)
- [Cell Culture](#)

### ART5 Antibody (Center) - Images



ART5 Antibody (Center)(Cat. #AP18878c) western blot analysis in A549 cell line lysates (35ug/lane). This demonstrates the ART5 antibody detected the ART5 protein (arrow).

### ART5 Antibody (Center) - Background

The protein encoded by this gene belongs to the ARG-specific ADP-ribosyltransferase family. Proteins in this family regulate the function of target proteins by attaching ADP-ribose to specific amino acid residues in their target proteins. The mouse homolog lacks a glycosylphosphatidylinositol-anchor signal sequence and is predicted to be a secretory enzyme. Transcript variants with different 5' UTRs, but encoding the same protein have been found for this gene.

### ART5 Antibody (Center) - References

Lamesch, P., et al. Genomics 89(3):307-315(2007)  
Clark, H.F., et al. Genome Res. 13(10):2265-2270(2003)  
Glowacki, G., et al. Protein Sci. 11(7):1657-1670(2002)  
Glowacki, G., et al. Gene 275(2):267-277(2001)  
Okazaki, I.J., et al. Annu. Rev. Nutr. 19, 485-509 (1999) :