

**TAS2R41 Antibody (N-term)**  
**Affinity Purified Rabbit Polyclonal Antibody (Pab)**  
**Catalog # AP18880a**

**Specification**

---

**TAS2R41 Antibody (N-term) - Product Information**

Application	WB,E
Primary Accession	<a href="#">P59536</a>
Other Accession	<a href="#">NP_795364.2</a>
Reactivity	Human
Host	Rabbit
Clonality	Polyclonal
Isotype	Rabbit IgG
Calculated MW	35896
Antigen Region	14-40

**TAS2R41 Antibody (N-term) - Additional Information**

**Gene ID** 259287

**Other Names**

Taste receptor type 2 member 41, T2R41, Taste receptor type 2 member 59, T2R59, TAS2R41

**Target/Specificity**

This TAS2R41 antibody is generated from rabbits immunized with a KLH conjugated synthetic peptide between 14-40 amino acids from the N-terminal region of human TAS2R41.

**Dilution**

WB~~1:1000

**Format**

Purified polyclonal antibody supplied in PBS with 0.09% (W/V) sodium azide. This antibody is purified through a protein A column, followed by peptide affinity purification.

**Storage**

Maintain refrigerated at 2-8°C for up to 2 weeks. For long term storage store at -20°C in small aliquots to prevent freeze-thaw cycles.

**Precautions**

TAS2R41 Antibody (N-term) is for research use only and not for use in diagnostic or therapeutic procedures.

**TAS2R41 Antibody (N-term) - Protein Information**

**Name** TAS2R41

**Function** Receptor that may play a role in the perception of bitterness and is gustducin-linked. May play a role in sensing the chemical composition of the gastrointestinal content. The activity of

this receptor may stimulate alpha gustducin, mediate PLC-beta-2 activation and lead to the gating of TRPM5 (By similarity).

**Cellular Location**

Membrane; Multi-pass membrane protein.

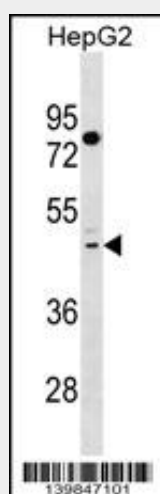
**Tissue Location**

Expressed in subsets of taste receptor cells of the tongue and exclusively in gustducin-positive cells

**TAS2R41 Antibody (N-term) - Protocols**

Provided below are standard protocols that you may find useful for product applications.

- [Western Blot](#)
- [Blocking Peptides](#)
- [Dot Blot](#)
- [Immunohistochemistry](#)
- [Immunofluorescence](#)
- [Immunoprecipitation](#)
- [Flow Cytometry](#)
- [Cell Culture](#)

**TAS2R41 Antibody (N-term) - Images**

TAS2R41 Antibody (N-term)(Cat. #AP18880a) western blot analysis in HepG2 cell line lysates (35ug/lane). This demonstrates the TAS2R41 antibody detected the TAS2R41 protein (arrow).

**TAS2R41 Antibody (N-term) - Background**

Receptor that may play a role in the perception of bitterness and is gustducin-linked. May play a role in sensing the chemical composition of the gastrointestinal content. The activity of this receptor may stimulate alpha gustducin, mediate PLC-beta-2 activation and lead to the gating of TRPM5 (By similarity).

**TAS2R41 Antibody (N-term) - References**

Go, Y., et al. Genetics 170(1):313-326(2005)  
Fischer, A., et al. Mol. Biol. Evol. 22(3):432-436(2005)

Zhang, Y., et al. Cell 112(3):293-301(2003)

Bufe, B., et al. Nat. Genet. 32(3):397-401(2002)

Montmayeur, J.P., et al. Curr. Opin. Neurobiol. 12(4):366-371(2002)