

**COL19A1 Antibody (N-term)**  
**Affinity Purified Rabbit Polyclonal Antibody (Pab)**  
**Catalog # AP18907a****Specification**

---

**COL19A1 Antibody (N-term) - Product Information**

Application	WB,E
Primary Accession	<a href="#">Q14993</a>
Other Accession	<a href="#">NP_001849.2</a>
Reactivity	Human, Mouse
Host	Rabbit
Clonality	Polyclonal
Isotype	Rabbit IgG
Calculated MW	115221
Antigen Region	175-204

**COL19A1 Antibody (N-term) - Additional Information****Gene ID** 1310**Other Names**

Collagen alpha-1(XIX) chain, Collagen alpha-1(Y) chain, COL19A1

**Target/Specificity**

This COL19A1 antibody is generated from rabbits immunized with a KLH conjugated synthetic peptide between 175-204 amino acids from the N-terminal region of human COL19A1.

**Dilution**

WB~~1:1000

E~~Use at an assay dependent concentration.

**Format**

Purified polyclonal antibody supplied in PBS with 0.09% (W/V) sodium azide. This antibody is purified through a protein A column, followed by peptide affinity purification.

**Storage**

Maintain refrigerated at 2-8°C for up to 2 weeks. For long term storage store at -20°C in small aliquots to prevent freeze-thaw cycles.

**Precautions**

COL19A1 Antibody (N-term) is for research use only and not for use in diagnostic or therapeutic procedures.

**COL19A1 Antibody (N-term) - Protein Information****Name** COL19A1**Function** May act as a cross-bridge between fibrils and other extracellular matrix molecules.

Involved in skeletal myogenesis in the developing esophagus. May play a role in organization of the pericellular matrix or the sphinteric smooth muscle.

**Cellular Location**

Secreted, extracellular space, extracellular matrix

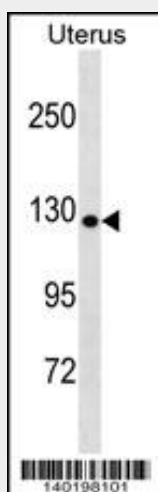
**Tissue Location**

Localized to vascular, neuronal, mesenchymal, and some epithelial basement membrane zones in umbilical cord

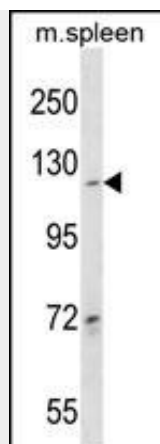
**COL19A1 Antibody (N-term) - Protocols**

Provided below are standard protocols that you may find useful for product applications.

- [Western Blot](#)
- [Blocking Peptides](#)
- [Dot Blot](#)
- [Immunohistochemistry](#)
- [Immunofluorescence](#)
- [Immunoprecipitation](#)
- [Flow Cytometry](#)
- [Cell Culture](#)

**COL19A1 Antibody (N-term) - Images**

COL19A1 Antibody (N-term)(Cat. #AP18907a) western blot analysis in Uterus tissue lysates (35ug/lane). This demonstrates the COL19A1 antibody detected the COL19A1 protein (arrow).



COL19A1 Antibody (N-term) (Cat. #AP18907a) western blot analysis in mouse spleen tissue lysates (35ug/lane). This demonstrates the COL19A1 antibody detected the COL19A1 protein (arrow).

#### **COL19A1 Antibody (N-term) - Background**

This gene encodes the alpha chain of type XIX collagen, a member of the FACIT collagen family (fibril-associated collagens with interrupted helices). Although the function of this collagen is not known, other members of this collagen family are found in association with fibril-forming collagens such as type I and II, and serve to maintain the integrity of the extracellular matrix. The transcript produced from this gene has an unusually large 3' UTR which has not been completely sequenced.

#### **COL19A1 Antibody (N-term) - References**

Rose, J.E., et al. Mol. Med. 16 (7-8), 247-253 (2010) : Barber, M.J., et al. PLoS ONE 5 (3), E9763 (2010) : Boudko, S.P., et al. J. Biol. Chem. 283(49):34345-34351(2008) Kapyla, J., et al. J. Biol. Chem. 279(49):51677-51687(2004) Mungall, A.J., et al. Nature 425(6960):805-811(2003)