

MBD6 Antibody (C-term)
Affinity Purified Rabbit Polyclonal Antibody (Pab)
Catalog # AP18913B**Specification**

MBD6 Antibody (C-term) - Product Information

Application	WB,E
Primary Accession	O96DN6
Other Accession	O3TY92 , NP_443129.3
Reactivity	Human, Mouse
Host	Rabbit
Clonality	Polyclonal
Isotype	Rabbit IgG
Calculated MW	101201
Antigen Region	977-1003

MBD6 Antibody (C-term) - Additional Information**Gene ID** 114785**Other Names**

Methyl-CpG-binding domain protein 6, Methyl-CpG-binding protein MBD6, MBD6, KIAA1887

Target/Specificity

This MBD6 antibody is generated from rabbits immunized with a KLH conjugated synthetic peptide between 977-1003 amino acids from the C-terminal region of human MBD6.

Dilution

WB~~1:1000

E~~Use at an assay dependent concentration.

Format

Purified polyclonal antibody supplied in PBS with 0.09% (W/V) sodium azide. This antibody is purified through a protein A column, followed by peptide affinity purification.

Storage

Maintain refrigerated at 2-8°C for up to 2 weeks. For long term storage store at -20°C in small aliquots to prevent freeze-thaw cycles.

Precautions

MBD6 Antibody (C-term) is for research use only and not for use in diagnostic or therapeutic procedures.

MBD6 Antibody (C-term) - Protein Information**Name** MBD6**Synonyms** KIAA1887

Function Non-catalytic component of the polycomb repressive deubiquitinase (PR-DUB) complex, a complex that specifically mediates deubiquitination of histone H2A monoubiquitinated at 'Lys-120' (H2AK119ub1) (PubMed:[24634419](#)). Important for stability of PR-DUB components and stimulating its ubiquitinase activity (PubMed:[36180891](#)). As part of the PR-DUB complex, associates with chromatin enriched in histone marks H3K4me1, H3K4me3, and H3K27Ac, but not in H3K27me3 (PubMed:[36180891](#)). MBD5 and MBD6 containing complexes associate with distinct chromatin regions enriched in genes involved in different pathways (PubMed:[36180891](#)). Heterochromatin recruitment is not mediated by DNA methylation (PubMed:[20700456](#)). The PR-DUB complex is an epigenetic regulator of gene expression, including genes involved in development, cell communication, signaling, cell proliferation and cell viability; may promote cancer cell growth (PubMed:[36180891](#)).

Cellular Location

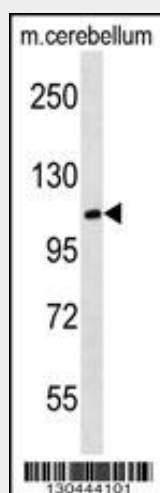
Nucleus. Chromosome. Note=Associates with heterochromatin containing chromocentres in a subset of cells in a DNA methylation- independent manner (PubMed:[20700456](#)). Localizes to sites of DNA damage independent of the PR-DUB complex (PubMed:[24634419](#))

MBD6 Antibody (C-term) - Protocols

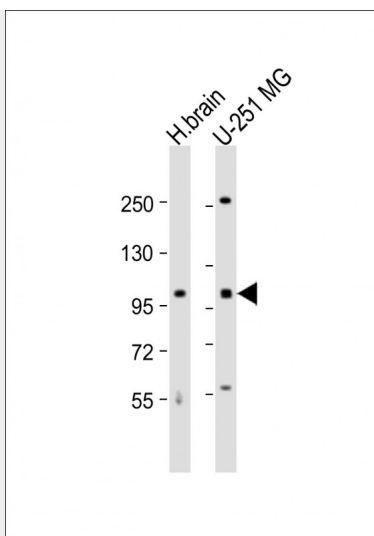
Provided below are standard protocols that you may find useful for product applications.

- [Western Blot](#)
- [Blocking Peptides](#)
- [Dot Blot](#)
- [Immunohistochemistry](#)
- [Immunofluorescence](#)
- [Immunoprecipitation](#)
- [Flow Cytometry](#)
- [Cell Culture](#)

MBD6 Antibody (C-term) - Images



MBD6 Antibody (C-term) (Cat. #AP18913b) western blot analysis in mouse cerebellum tissue lysates (35ug/lane). This demonstrates the MBD6 antibody detected the MBD6 protein (arrow).



All lanes : Anti-MBD6 Antibody (C-term) at 1:1000 dilution Lane 1: human brain lysate Lane 2: U-251 MG whole cell lysate Lysates/proteins at 20 µg per lane. Secondary Goat Anti-Rabbit IgG, (H+L), Peroxidase conjugated at 1/10000 dilution. Predicted band size : 101 kDa Blocking/Dilution buffer: 5% NFDM/TBST.

MBD6 Antibody (C-term) - Background

Binds to heterochromatin. Does not interact with either methylated or unmethylated DNA (in vitro).

MBD6 Antibody (C-term) - References

Laget, S., et al. PLoS ONE 5 (8), E11982 (2010) :
 Roloff, T.C., et al. BMC Genomics 4 (1), 1 (2003) :