

**GAS2 Antibody (N-term)**  
**Affinity Purified Rabbit Polyclonal Antibody (Pab)**  
**Catalog # AP18918A**

**Specification**

---

**GAS2 Antibody (N-term) - Product Information**

Application	WB,E
Primary Accession	<a href="#">O43903</a>
Other Accession	<a href="#">NP_001137302.1</a>
Reactivity	Human
Host	Rabbit
Clonality	Polyclonal
Isotype	Rabbit IgG
Calculated MW	34945
Antigen Region	68-94

**GAS2 Antibody (N-term) - Additional Information**

**Gene ID** 2620

**Other Names**

Growth arrest-specific protein 2, GAS-2, GAS2

**Target/Specificity**

This GAS2 antibody is generated from rabbits immunized with a KLH conjugated synthetic peptide between 68-94 amino acids from the N-terminal region of human GAS2.

**Dilution**

WB~~1:1000

E~~Use at an assay dependent concentration.

**Format**

Purified polyclonal antibody supplied in PBS with 0.09% (W/V) sodium azide. This antibody is purified through a protein A column, followed by peptide affinity purification.

**Storage**

Maintain refrigerated at 2-8°C for up to 2 weeks. For long term storage store at -20°C in small aliquots to prevent freeze-thaw cycles.

**Precautions**

GAS2 Antibody (N-term) is for research use only and not for use in diagnostic or therapeutic procedures.

**GAS2 Antibody (N-term) - Protein Information**

**Name** GAS2

**Function** Required to maintain microtubule bundles in inner ear supporting cells, affording them

with mechanical stiffness to transmit sound energy through the cochlea.

#### Cellular Location

Cytoplasm, cytoskeleton, stress fiber. Membrane {ECO:0000250|UniProtKB:P11862}; Peripheral membrane protein {ECO:0000250|UniProtKB:P11862} Note=Component of the microfilament system. Colocalizes with actin fibers at the cell border and along the stress fibers in growth-arrested fibroblasts. Mainly membrane-associated. When hyperphosphorylated, accumulates at membrane ruffles (By similarity) Colocalizes with dephosphorylated alpha-tubulin along the length of microtubule bundles in inner and outer pillar cells (By similarity) {ECO:0000250|UniProtKB:P11862}

#### Tissue Location

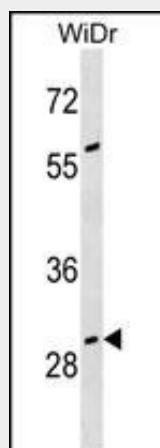
Ubiquitously expressed with highest levels in liver, lung, and kidney. Not found in spleen

### GAS2 Antibody (N-term) - Protocols

Provided below are standard protocols that you may find useful for product applications.

- [Western Blot](#)
- [Blocking Peptides](#)
- [Dot Blot](#)
- [Immunohistochemistry](#)
- [Immunofluorescence](#)
- [Immunoprecipitation](#)
- [Flow Cytometry](#)
- [Cell Culture](#)

### GAS2 Antibody (N-term) - Images



GAS2 Antibody (N-term) (Cat. #AP18918a) western blot analysis in WiDr cell line lysates (35ug/lane). This demonstrates the GAS2 antibody detected the GAS2 protein (arrow).

### GAS2 Antibody (N-term) - Background

The protein encoded by this gene is a caspase-3 substrate that plays a role in regulating microfilament and cell shape changes during apoptosis. It can also modulate cell susceptibility to p53-dependent apoptosis by inhibiting calpain activity. Multiple alternatively spliced variants, encoding the same protein, have been identified.

**GAS2 Antibody (N-term) - References**

Huang, W., et al. Mol. Cell. Biol. 30(19):4575-4594(2010)  
Shimada, M., et al. Hum. Genet. 128(4):433-441(2010)  
Benetti, R., et al. J. Biol. Chem. 280(23):22070-22080(2005)  
Tsutsumi, S., et al. Am. J. Hum. Genet. 74(6):1255-1261(2004)  
Benetti, R., et al. EMBO J. 20(11):2702-2714(2001)