

**INTS4L1/INTS4L2 Antibody (Center)**  
**Affinity Purified Rabbit Polyclonal Antibody (Pab)**  
**Catalog # AP18926c****Specification**

---

**INTS4L1/INTS4L2 Antibody (Center) - Product Information**

Application	WB,E
Primary Accession	<a href="#">Q96LV5</a>
Reactivity	Human
Host	Rabbit
Clonality	Polyclonal
Isotype	Rabbit IgG
Antigen Region	232-258

**INTS4L1/INTS4L2 Antibody (Center) - Additional Information****Other Names**

Integrator complex subunit 4-like protein 1, INTS4L1

**Target/Specificity**

This INTS4L1/INTS4L2 antibody is generated from rabbits immunized with a KLH conjugated synthetic peptide between 232-258 amino acids from the Central region of human INTS4L1/INTS4L2.

**Dilution**

WB~~1:1000

**Format**

Purified polyclonal antibody supplied in PBS with 0.09% (W/V) sodium azide. This antibody is purified through a protein A column, followed by peptide affinity purification.

**Storage**

Maintain refrigerated at 2-8°C for up to 2 weeks. For long term storage store at -20°C in small aliquots to prevent freeze-thaw cycles.

**Precautions**

INTS4L1/INTS4L2 Antibody (Center) is for research use only and not for use in diagnostic or therapeutic procedures.

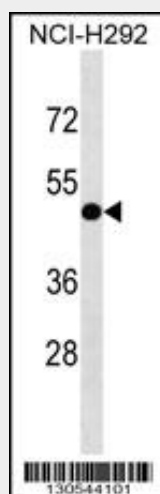
**INTS4L1/INTS4L2 Antibody (Center) - Protein Information****INTS4L1/INTS4L2 Antibody (Center) - Protocols**

Provided below are standard protocols that you may find useful for product applications.

- [Western Blot](#)

- [Blocking Peptides](#)
- [Dot Blot](#)
- [Immunohistochemistry](#)
- [Immunofluorescence](#)
- [Immunoprecipitation](#)
- [Flow Cytometry](#)
- [Cell Culture](#)

#### **INTS4L1/INTS4L2 Antibody (Center) - Images**



INTS4L1/INTS4L2 Antibody (Center) (Cat. #AP18926c) western blot analysis in NCI-H292 cell line lysates (35ug/lane). This demonstrates the INTS4L1/INTS4L2 antibody detected the INTS4L1/INTS4L2 protein (arrow).

#### **INTS4L1/INTS4L2 Antibody (Center) - Background**

The function of this protein remains unknown.