

**LRRC70 Antibody (C-term)**  
**Affinity Purified Rabbit Polyclonal Antibody (Pab)**  
**Catalog # AP18956b**

**Specification**

---

**LRRC70 Antibody (C-term) - Product Information**

Application	WB,E
Primary Accession	<a href="#">Q7Z2Q7</a>
Other Accession	<a href="#">NP_852607.3</a>
Reactivity	Human
Host	Rabbit
Clonality	Polyclonal
Isotype	Rabbit IgG
Calculated MW	70301
Antigen Region	542-570

**LRRC70 Antibody (C-term) - Additional Information**

**Gene ID** 100130733

**Other Names**

Leucine-rich repeat-containing protein 70, Synleurin, LRRC70

**Target/Specificity**

This LRRC70 antibody is generated from rabbits immunized with a KLH conjugated synthetic peptide between 542-570 amino acids from the C-terminal region of human LRRC70.

**Dilution**

WB~~1:1000

**Format**

Purified polyclonal antibody supplied in PBS with 0.09% (W/V) sodium azide. This antibody is purified through a protein A column, followed by peptide affinity purification.

**Storage**

Maintain refrigerated at 2-8°C for up to 2 weeks. For long term storage store at -20°C in small aliquots to prevent freeze-thaw cycles.

**Precautions**

LRRC70 Antibody (C-term) is for research use only and not for use in diagnostic or therapeutic procedures.

**LRRC70 Antibody (C-term) - Protein Information**

**Name** LRRC70

**Function** Renders cells highly sensitive to the activation by cytokines and lipopolysaccharide (LPS).

**Cellular Location**

Membrane; Single-pass membrane protein

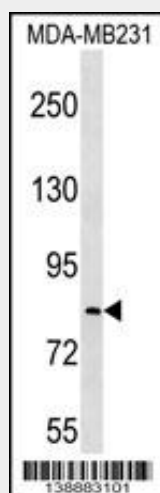
**Tissue Location**

Expressed at low levels in many tissues, including smooth muscle, brain, uterus, pancreas, cartilage, adipose, spleen and testis.

**LRRC70 Antibody (C-term) - Protocols**

Provided below are standard protocols that you may find useful for product applications.

- [Western Blot](#)
- [Blocking Peptides](#)
- [Dot Blot](#)
- [Immunohistochemistry](#)
- [Immunofluorescence](#)
- [Immunoprecipitation](#)
- [Flow Cytometry](#)
- [Cell Culture](#)

**LRRC70 Antibody (C-term) - Images**

LRRC70 Antibody (C-term) (Cat. #AP18956b) western blot analysis in MDA-MB231 cell line lysates (35ug/lane). This demonstrates the LRRC70 antibody detected the LRRC70 protein (arrow).

**LRRC70 Antibody (C-term) - Background**

Renders cells highly sensitive to the activation by cytokines and lipopolysaccharide (LPS).

**LRRC70 Antibody (C-term) - References**

Wang, W., et al. Biochem. Biophys. Res. Commun. 305(4):981-988(2003)