

SLCO1B3 Antibody (C-term)
Affinity Purified Rabbit Polyclonal Antibody (Pab)
Catalog # AP18964b

Specification

SLCO1B3 Antibody (C-term) - Product Information

Application	WB,E
Primary Accession	O9NPD5
Other Accession	NP_062818.1
Reactivity	Human
Host	Rabbit
Clonality	Polyclonal
Isotype	Rabbit IgG
Antigen Region	639-668

SLCO1B3 Antibody (C-term) - Additional Information

Gene ID 28234

Other Names

Solute carrier organic anion transporter family member 1B3, Liver-specific organic anion transporter 2, LST-2, Organic anion transporter 8, Organic anion-transporting polypeptide 8, OATP-8, Solute carrier family 21 member 8, SLCO1B3, LST2, OATP1B3, OATP8, SLC21A8

Target/Specificity

This SLCO1B3 antibody is generated from rabbits immunized with a KLH conjugated synthetic peptide between 639-668 amino acids from the C-terminal region of human SLCO1B3.

Dilution

WB~~1:2000

Format

Purified polyclonal antibody supplied in PBS with 0.09% (W/V) sodium azide. This antibody is purified through a protein A column, followed by peptide affinity purification.

Storage

Maintain refrigerated at 2-8°C for up to 2 weeks. For long term storage store at -20°C in small aliquots to prevent freeze-thaw cycles.

Precautions

SLCO1B3 Antibody (C-term) is for research use only and not for use in diagnostic or therapeutic procedures.

SLCO1B3 Antibody (C-term) - Protein Information

Name SLCO1B3

Synonyms LST2, OATP1B3, OATP8, SLC21A8

Function Mediates the Na(+)-independent uptake of organic anions (PubMed:[15159445](#), PubMed:[17412826](#), PubMed:[10779507](#)). Shows broad substrate specificity, can transport both organic anions such as bile acid taurocholate (cholytaurine) and conjugated steroids (17-beta-glucuronosyl estradiol, dehydroepiandrosterone sulfate (DHEAS), and estrone 3-sulfate), as well as eicosanoid leukotriene C4, prostaglandin E2 and L-thyroxine (T4) (PubMed:[15159445](#), PubMed:[17412826](#), PubMed:[10779507](#), PubMed:[12568656](#), PubMed:[11159893](#), PubMed:[19129463](#)). Hydrogencarbonate/HCO₃⁻ acts as the probable counteranion that exchanges for organic anions (PubMed:[19129463](#)). Shows a pH-sensitive substrate specificity towards sulfated steroids, taurocholate and T4 which may be ascribed to the protonation state of the binding site and leads to a stimulation of substrate transport in an acidic microenvironment (PubMed:[19129463](#)). Involved in the clearance of bile acids and organic anions from the liver (PubMed:[22232210](#)). Can take up bilirubin glucuronides from plasma into the liver, contributing to the detoxification-enhancing liver-blood shuttling loop (PubMed:[22232210](#)). Transports coproporphyrin I and III, by-products of heme synthesis, and may be involved in their hepatic disposition (PubMed:[26383540](#)). May contribute to regulate the transport of organic compounds in testes across the blood-testis-barrier (Probable). Can transport HMG-CoA reductase inhibitors (also known as statins) such as pitavastatin, a clinically important class of hypolipidemic drugs (PubMed:[15159445](#)). May play an important role in plasma and tissue distribution of the structurally diverse chemotherapeutic drugs methotrexate and paclitaxel (PubMed:[23243220](#)). May also transport antihypertension agents, such as the angiotensin-converting enzyme (ACE) inhibitor prodrug enalapril, and the highly selective angiotensin II AT1-receptor antagonist valsartan, in the liver (PubMed:[16627748](#), PubMed:[16624871](#)).

Cellular Location

Basolateral cell membrane; Multi-pass membrane protein. Basal cell membrane; Multi-pass membrane protein. Note=Localized to the basolateral membrane of hepatocytes (PubMed:10779507). Localized to the basal membrane of Sertoli cells (PubMed:35307651)

Tissue Location

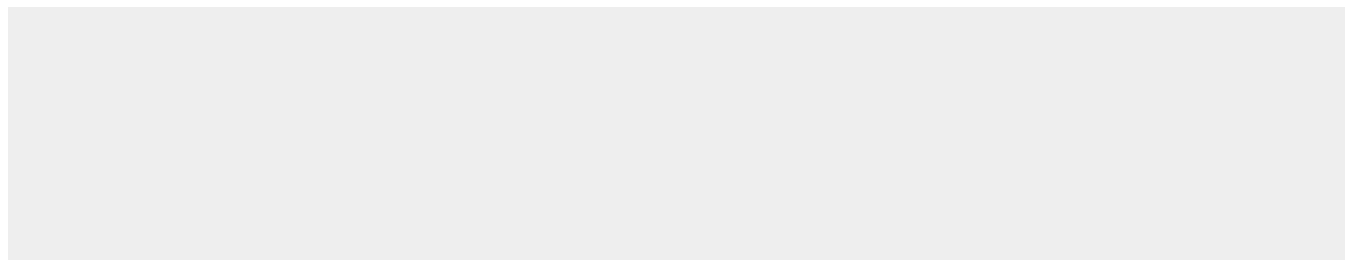
Highly expressed in liver, in particular at the basolateral membrane of hepatocytes near the central vein (PubMed:10779507, PubMed:15159445). Expressed in the placenta (PubMed:12409283). In testis, primarily localized to the basal membrane of Sertoli cells and weakly expressed in Leydig cells and within the tubules (PubMed:35307651).

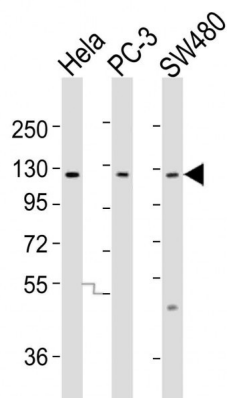
SLC01B3 Antibody (C-term) - Protocols

Provided below are standard protocols that you may find useful for product applications.

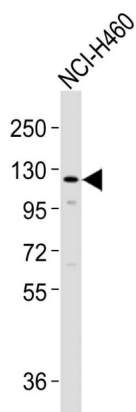
- [Western Blot](#)
- [Blocking Peptides](#)
- [Dot Blot](#)
- [Immunohistochemistry](#)
- [Immunofluorescence](#)
- [Immunoprecipitation](#)
- [Flow Cytometry](#)
- [Cell Culture](#)

SLC01B3 Antibody (C-term) - Images

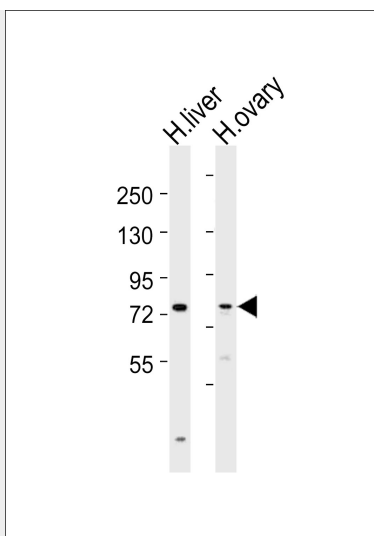




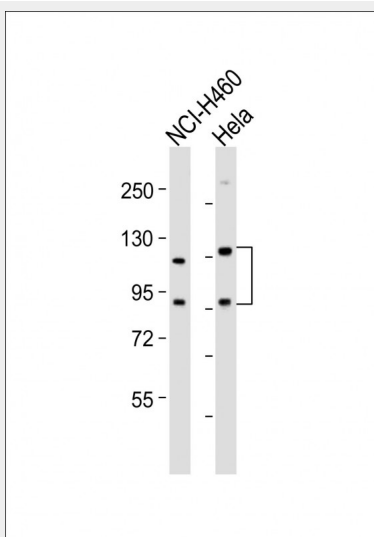
All lanes : Anti-SLCO1B3 Antibody (C-term) at 1:2000 dilution Lane 1: HeLa whole cell lysates Lane 2: PC-3 whole cell lysates Lane 3: SW480 whole cell lysates Lysates/proteins at 20 µg per lane. Secondary Goat Anti-Rabbit IgG, (H+L), Peroxidase conjugated at 1/10000 dilution Predicted band size : 77 kDa Blocking/Dilution buffer: 5% NFDM/TBST.



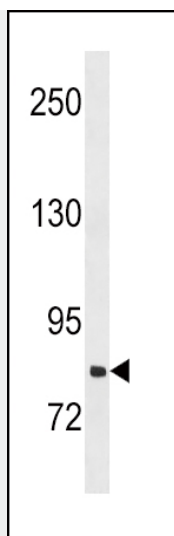
Anti-SLCO1B3 Antibody (C-term) at 1:1000 dilution + NCI-H460 whole cell lysates Lysates/proteins at 20 µg per lane. Secondary Goat Anti-Rabbit IgG, (H+L), Peroxidase conjugated at 1/10000 dilution Predicted band size : 77 kDa Blocking/Dilution buffer: 5% NFDM/TBST.



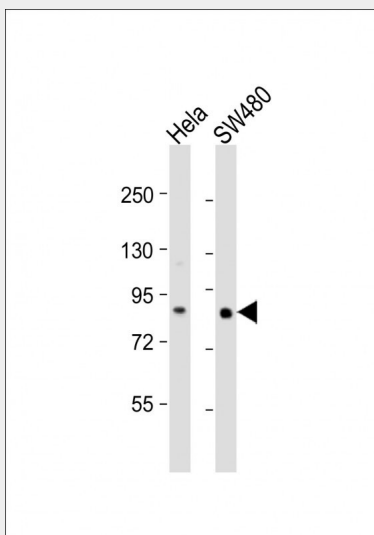
All lanes : Anti-SLCO1B3 Antibody (C-term) at 1:2000 dilution Lane 1: human liver lysates Lane 2: human ovary lysates Lysates/proteins at 20 µg per lane. Secondary Goat Anti-Rabbit IgG, (H+L), Peroxidase conjugated at 1/10000 dilution Predicted band size : 77 kDa Blocking/Dilution buffer: 5% NFDM/TBST.



All lanes : Anti-SLCO1B3 Antibody (C-term) at 1:2000 dilution Lane 1: NCI-H460 whole cell lysate Lane 2: HeLa whole cell lysate Lysates/proteins at 20 µg per lane. Secondary Goat Anti-Rabbit IgG, (H+L), Peroxidase conjugated at 1/10000 dilution. Predicted band size : 77 kDa Blocking/Dilution buffer: 5% NFDM/TBST.



SLCO1B3 Antibody (C-term) (Cat. #AP18964b) western blot analysis in NCI-H460 cell line lysates (35ug/lane). This demonstrates the SLCO1B3 antibody detected the SLCO1B3 protein (arrow).



All lanes : Anti-SLCO1B3 Antibody (C-term) at 1:2000 dilution Lane 1: HeLa whole cell lysate Lane 2: SW480 whole cell lysate Lysates/proteins at 20 µg per lane. Secondary Goat Anti-Rabbit IgG, (H+L), Peroxidase conjugated at 1/10000 dilution. Predicted band size : 77 kDa Blocking/Dilution buffer: 5% NFDM/TBST.

SLCO1B3 Antibody (C-term) - Background

SLCO1B3 belongs to the organic anion transporter (OATP) family. OATPs are involved in the membrane transport of bile acids, conjugated steroids, thyroid hormone, eicosanoids, peptides, and numerous drugs in many tissues (Mikkaichi et al., 2004 [PubMed 14993604]).

SLCO1B3 Antibody (C-term) - References

Hu, M., et al. Pharmacogenet. Genomics 20(10):634-637(2010)
Weiner, M., et al. Antimicrob. Agents Chemother. 54(10):4192-4200(2010)
Kang, T.W., et al. Hum. Mol. Genet. 19(18):3672-3678(2010)
Takahashi, N., et al. J. Hum. Genet. (2010) In press :

Justenhoven, C., et al. Breast Cancer Res. Treat. (2010) In press :