

**RPL36A Antibody (C-term)**  
**Affinity Purified Rabbit Polyclonal Antibody (Pab)**  
**Catalog # AP18971B****Specification**

---

**RPL36A Antibody (C-term) - Product Information**

Application	WB,E
Primary Accession	<a href="#">P83881</a>
Other Accession	<a href="#">Q969Q0</a> , <a href="#">P83883</a> , <a href="#">P83884</a> , <a href="#">P83882</a> , <a href="#">P61485</a> , <a href="#">Q3SZ59</a> , <a href="#">NP_066357.1</a>
Reactivity	Human
Predicted	Bovine, Zebrafish, Mouse, Pig, Rat
Host	Rabbit
Clonality	Polyclonal
Isotype	Rabbit IgG
Calculated MW	12441
Antigen Region	74-102

**RPL36A Antibody (C-term) - Additional Information****Gene ID** 6173**Other Names**

60S ribosomal protein L36a, 60S ribosomal protein L44, Cell growth-inhibiting gene 15 protein, Cell migration-inducing gene 6 protein, RPL36A, RPL44

**Target/Specificity**

This RPL36A antibody is generated from rabbits immunized with a KLH conjugated synthetic peptide between 74-102 amino acids from the C-terminal region of human RPL36A.

**Dilution**

WB~~1:1000

**Format**

Purified polyclonal antibody supplied in PBS with 0.09% (W/V) sodium azide. This antibody is purified through a protein A column, followed by peptide affinity purification.

**Storage**

Maintain refrigerated at 2-8°C for up to 2 weeks. For long term storage store at -20°C in small aliquots to prevent freeze-thaw cycles.

**Precautions**

RPL36A Antibody (C-term) is for research use only and not for use in diagnostic or therapeutic procedures.

**RPL36A Antibody (C-term) - Protein Information****Name** RPL36A

**Synonyms** RPL44

**Function** Component of the large ribosomal subunit. The ribosome is a large ribonucleoprotein complex responsible for the synthesis of proteins in the cell.

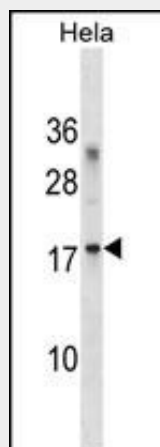
**Cellular Location**

Cytoplasm.

**RPL36A Antibody (C-term) - Protocols**

Provided below are standard protocols that you may find useful for product applications.

- [Western Blot](#)
- [Blocking Peptides](#)
- [Dot Blot](#)
- [Immunohistochemistry](#)
- [Immunofluorescence](#)
- [Immunoprecipitation](#)
- [Flow Cytometry](#)
- [Cell Culture](#)

**RPL36A Antibody (C-term) - Images**

RPL36A Antibody (C-term) (Cat. #AP18971b) western blot analysis in HeLa cell line lysates (35ug/lane). This demonstrates the RPL36A antibody detected the RPL36A protein (arrow).

**RPL36A Antibody (C-term) - Background**

Cytoplasmic ribosomes, organelles that catalyze protein synthesis, consist of a small 40S subunit and a large 60S subunit. Together these subunits are composed of 4 RNA species and approximately 80 structurally distinct proteins. This gene encodes a ribosomal protein that is a component of the 60S subunit. The protein, which shares sequence similarity with yeast ribosomal protein L44, belongs to the L44E (L36AE) family of ribosomal proteins. Although this gene has been referred to as ribosomal protein L44 (RPL44), its official name is ribosomal protein L36a (RPL36A). This gene and the human gene officially named ribosomal protein L36a-like (RPL36AL) encode nearly identical proteins; however, they are distinct genes. As is typical for genes encoding

ribosomal proteins, there are multiple processed pseudogenes of this gene dispersed through the genome.

#### **RPL36A Antibody (C-term) - References**

Ewing, R.M., et al. Mol. Syst. Biol. 3, 89 (2007) :  
Ross, M.T., et al. Nature 434(7031):325-337(2005)  
Kim, J.H., et al. Hepatology 39(1):129-138(2004)  
Kapp, L.D., et al. Annu. Rev. Biochem. 73, 657-704 (2004) :  
Mazumder, B., et al. Cell 115(2):187-198(2003)