

**APBA3 Antibody (Center)**  
**Affinity Purified Rabbit Polyclonal Antibody (Pab)**  
**Catalog # AP18975c****Specification**

---

**APBA3 Antibody (Center) - Product Information**

Application	WB,E
Primary Accession	<a href="#">O96018</a>
Other Accession	<a href="#">NP_004877.1</a>
Reactivity	Human
Host	Rabbit
Clonality	Polyclonal
Isotype	Rabbit IgG
Calculated MW	61454
Antigen Region	299-327

**APBA3 Antibody (Center) - Additional Information****Gene ID** 9546**Other Names**

Amyloid beta A4 precursor protein-binding family A member 3, Adapter protein X11gamma, Neuron-specific X11L2 protein, Neuronal Munc18-1-interacting protein 3, Mint-3, APBA3, MINT3, X11L2

**Target/Specificity**

This APBA3 antibody is generated from rabbits immunized with a KLH conjugated synthetic peptide between 299-327 amino acids from the Central region of human APBA3.

**Dilution**

WB~~1:1000

E~~Use at an assay dependent concentration.

**Format**

Purified polyclonal antibody supplied in PBS with 0.09% (W/V) sodium azide. This antibody is purified through a protein A column, followed by peptide affinity purification.

**Storage**

Maintain refrigerated at 2-8°C for up to 2 weeks. For long term storage store at -20°C in small aliquots to prevent freeze-thaw cycles.

**Precautions**

APBA3 Antibody (Center) is for research use only and not for use in diagnostic or therapeutic procedures.

**APBA3 Antibody (Center) - Protein Information****Name** APBA3

**Synonyms** MINT3, X11L2

**Function** May modulate processing of the amyloid-beta precursor protein (APP) and hence formation of APP-beta. May enhance the activity of HIF1A in macrophages by inhibiting the activity of HIF1AN.

**Cellular Location**

Cytoplasm, perinuclear region

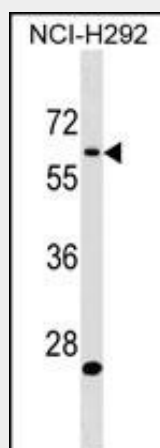
**Tissue Location**

Expressed in all tissues examined with lower levels in brain and testis

**APBA3 Antibody (Center) - Protocols**

Provided below are standard protocols that you may find useful for product applications.

- [Western Blot](#)
- [Blocking Peptides](#)
- [Dot Blot](#)
- [Immunohistochemistry](#)
- [Immunofluorescence](#)
- [Immunoprecipitation](#)
- [Flow Cytometry](#)
- [Cell Culture](#)

**APBA3 Antibody (Center) - Images**

APBA3 Antibody (Center) (Cat. #AP18975c) western blot analysis in NCI-H292 cell line lysates (35ug/lane). This demonstrates the APBA3 antibody detected the APBA3 protein (arrow).

**APBA3 Antibody (Center) - Background**

The protein encoded by this gene is a member of the X11 protein family. It is an adapter protein that interacts with the Alzheimer's disease amyloid precursor protein. This gene product is believed to be involved in signal transduction processes. This gene is a candidate gene for Alzheimer's disease.

**APBA3 Antibody (Center) - References**

Shimada, M., et al. Hum. Genet. 128(4):433-441(2010) Swistowski, A., et al. J. Neurosci.

29(50):15703-15712(2009) Sakamoto, T., et al. J. Biol. Chem. 284(44):30350-30359(2009) Han, J., et al. J. Cell. Sci. 121 (PT 13), 2217-2223 (2008) : Shrivastava-Ranjan, P., et al. Mol. Biol. Cell 19(1):51-64(2008)