

MCCC2 Antibody (C-term)
Affinity Purified Rabbit Polyclonal Antibody (Pab)
Catalog # AP18978b**Specification**

MCCC2 Antibody (C-term) - Product Information

Application	WB,E
Primary Accession	O9HCC0
Other Accession	NP_071415.1
Reactivity	Human
Host	Rabbit
Clonality	Polyclonal
Isotype	Rabbit IgG
Calculated MW	61333
Antigen Region	468-496

MCCC2 Antibody (C-term) - Additional Information**Gene ID** 64087**Other Names**

Methylcrotonoyl-CoA carboxylase beta chain, mitochondrial, MCCase subunit beta, 3-methylcrotonyl-CoA carboxylase 2, 3-methylcrotonyl-CoA carboxylase non-biotin-containing subunit, 3-methylcrotonyl-CoA:carbon dioxide ligase subunit beta, MCCC2, MCCB

Target/Specificity

This MCCC2 antibody is generated from rabbits immunized with a KLH conjugated synthetic peptide between 468-496 amino acids from the C-terminal region of human MCCC2.

Dilution

WB~~1:1000

E~~Use at an assay dependent concentration.

Format

Purified polyclonal antibody supplied in PBS with 0.09% (W/V) sodium azide. This antibody is purified through a protein A column, followed by peptide affinity purification.

Storage

Maintain refrigerated at 2-8°C for up to 2 weeks. For long term storage store at -20°C in small aliquots to prevent freeze-thaw cycles.

Precautions

MCCC2 Antibody (C-term) is for research use only and not for use in diagnostic or therapeutic procedures.

MCCC2 Antibody (C-term) - Protein Information**Name** MCCC2

Synonyms MCCB

Function Carboxyltransferase subunit of the 3-methylcrotonyl-CoA carboxylase, an enzyme that catalyzes the conversion of 3- methylcrotonyl-CoA to 3-methylglutaconyl-CoA, a critical step for leucine and isovaleric acid catabolism.

Cellular Location

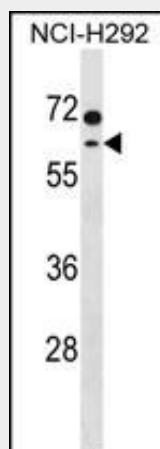
Mitochondrion matrix

MCCC2 Antibody (C-term) - Protocols

Provided below are standard protocols that you may find useful for product applications.

- [Western Blot](#)
- [Blocking Peptides](#)
- [Dot Blot](#)
- [Immunohistochemistry](#)
- [Immunofluorescence](#)
- [Immunoprecipitation](#)
- [Flow Cytometry](#)
- [Cell Culture](#)

MCCC2 Antibody (C-term) - Images



MCCC2 Antibody (C-term) (Cat. #AP18978b) western blot analysis in NCI-H292 cell line lysates (35ug/lane). This demonstrates the MCCC2 antibody detected the MCCC2 protein (arrow).

MCCC2 Antibody (C-term) - Background

This gene encodes the small subunit of 3-methylcrotonyl-CoA carboxylase. This enzyme functions as a heterodimer and catalyzes the carboxylation of 3-methylcrotonyl-CoA to form 3-methylglutaconyl-CoA. Mutations in this gene are associated with 3-Methylcrotonylglycinuria, an autosomal recessive disorder of leucine catabolism.

MCCC2 Antibody (C-term) - References

Yoshida, T., et al. Int. J. Mol. Med. 25(4):649-656(2010) Oguri, M., et al. Am. J. Hypertens. 23(1):70-77(2010) Cho, Y.S., et al. Proteins 70(1):268-272(2008) Uematsu, M., et al. J. Hum. Genet. 52(12):1040-1043(2007) Stadler, S.C., et al. Biochem. Biophys. Res. Commun. 334(3):939-946(2005)