

**PTCRA Antibody (C-term)**  
**Affinity Purified Rabbit Polyclonal Antibody (Pab)**  
**Catalog # AP18980B**

**Specification**

---

**PTCRA Antibody (C-term) - Product Information**

Application	WB,E
Primary Accession	<a href="#">Q6ISU1</a>
Other Accession	<a href="#">NP_612153.2</a>
Reactivity	Human
Host	Rabbit
Clonality	Polyclonal
Isotype	Rabbit IgG
Calculated MW	29266
Antigen Region	197-225

**PTCRA Antibody (C-term) - Additional Information**

**Gene ID** 171558

**Other Names**

Pre T-cell antigen receptor alpha, pT-alpha, pTa, pT-alpha-TCR, PTCRA

**Target/Specificity**

This PTCRA antibody is generated from rabbits immunized with a KLH conjugated synthetic peptide between 197-225 amino acids from the C-terminal region of human PTCRA.

**Dilution**

WB~~1:1000

E~~Use at an assay dependent concentration.

**Format**

Purified polyclonal antibody supplied in PBS with 0.09% (W/V) sodium azide. This antibody is purified through a protein A column, followed by peptide affinity purification.

**Storage**

Maintain refrigerated at 2-8°C for up to 2 weeks. For long term storage store at -20°C in small aliquots to prevent freeze-thaw cycles.

**Precautions**

PTCRA Antibody (C-term) is for research use only and not for use in diagnostic or therapeutic procedures.

**PTCRA Antibody (C-term) - Protein Information**

**Name** PTCRA ([HGNC:21290](#))

**Function** Component of the pre-T-cell receptor complex (composed of PTCRA, TCRB and the CD3

complex) that has a crucial role in early T- cell development, particularly alpha-beta T cell differentiation.

**Cellular Location**

Membrane; Single-pass type I membrane protein. Cell membrane

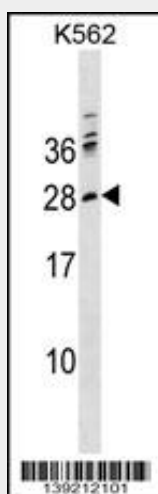
**Tissue Location**

Expressed in immature but not mature T-cells. Also found in CD34+ cells from peripheral blood, CD34+ precursors from umbilical cord blood and adult bone marrow

**PTCRA Antibody (C-term) - Protocols**

Provided below are standard protocols that you may find useful for product applications.

- [Western Blot](#)
- [Blocking Peptides](#)
- [Dot Blot](#)
- [Immunohistochemistry](#)
- [Immunofluorescence](#)
- [Immunoprecipitation](#)
- [Flow Cytometry](#)
- [Cell Culture](#)

**PTCRA Antibody (C-term) - Images**

PTCRA Antibody (C-term) (Cat. #AP18980b) western blot analysis in K562 cell line lysates (35ug/lane). This demonstrates the PTCRA antibody detected the PTCRA protein (arrow).

**PTCRA Antibody (C-term) - Background**

In immature T cells the T-cell receptor beta-chain gene (TCRB; MIM 186930) is rearranged and expressed before the TCRA (MIM 186880) chain. At this early stage, TCRB can associate with the pre-T-cell receptor alpha chain (PTCRA). The PTCRA, together with TCRB and the CD3 complex (see MIM 186740), minimally make up the pre-T cell receptor (pre-TCR), which regulates early T cell development.

**PTCRA Antibody (C-term) - References**

Velez, D.R., et al. Am. J. Obstet. Gynecol. 200 (2), 209 (2009) :  
Menon, R., et al. Reprod. Biol. Endocrinol. 7, 62 (2009) :  
Velez, D.R., et al. PLoS ONE 3 (9), E3283 (2008) :  
Navarro, M.N., et al. Blood 110(13):4331-4340(2007)  
Bas, A., et al. J. Immunol. 171(7):3359-3371(2003)