

KCTD17 Antibody (Center)
Affinity Purified Rabbit Polyclonal Antibody (Pab)
Catalog # AP18982c**Specification**

KCTD17 Antibody (Center) - Product Information

| | |
|-------------------|-----------------------------|
| Application | WB,E |
| Primary Accession | Q8N5Z5 |
| Other Accession | NP_078957.2 |
| Reactivity | Human |
| Host | Rabbit |
| Clonality | Polyclonal |
| Isotype | Rabbit IgG |
| Calculated MW | 34888 |
| Antigen Region | 107-136 |

KCTD17 Antibody (Center) - Additional Information**Gene ID** 79734**Other Names**

BTB/POZ domain-containing protein KCTD17, KCTD17

Target/Specificity

This KCTD17 antibody is generated from rabbits immunized with a KLH conjugated synthetic peptide between 107-136 amino acids from the Central region of human KCTD17.

Dilution

WB~~1:1000

Format

Purified polyclonal antibody supplied in PBS with 0.09% (W/V) sodium azide. This antibody is purified through a protein A column, followed by peptide affinity purification.

Storage

Maintain refrigerated at 2-8°C for up to 2 weeks. For long term storage store at -20°C in small aliquots to prevent freeze-thaw cycles.

Precautions

KCTD17 Antibody (Center) is for research use only and not for use in diagnostic or therapeutic procedures.

KCTD17 Antibody (Center) - Protein Information**Name** KCTD17 ([HGNC:25705](#))

Function Substrate-adapter for CUL3-RING ubiquitin ligase complexes which mediates the ubiquitination and subsequent proteasomal degradation of TCHP, a protein involved in ciliogenesis

down- regulation. Thereby, positively regulates ciliogenesis, playing a crucial role in the initial steps of axoneme extension (PubMed:[25270598](#)). May also play a role in endoplasmic reticulum calcium ion homeostasis (PubMed:[25983243](#)).

Cellular Location

Cytoplasm.

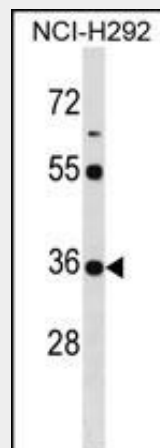
Tissue Location

Highly expressed in brain. Highest expression is observed in the putamen and the thalamus

KCTD17 Antibody (Center) - Protocols

Provided below are standard protocols that you may find useful for product applications.

- [Western Blot](#)
- [Blocking Peptides](#)
- [Dot Blot](#)
- [Immunohistochemistry](#)
- [Immunofluorescence](#)
- [Immunoprecipitation](#)
- [Flow Cytometry](#)
- [Cell Culture](#)

KCTD17 Antibody (Center) - Images

KCTD17 Antibody (Center) (Cat. #AP18982c) western blot analysis in NCI-H292 cell line lysates (35ug/lane). This demonstrates the KCTD17 antibody detected the KCTD17 protein (arrow).

KCTD17 Antibody (Center) - Background

The function of this protein remains unknown.

KCTD17 Antibody (Center) - References

Dunham, I., et al. Nature 402(6761):489-495(1999)