

CALHM3 Antibody (N-term)
Affinity Purified Rabbit Polyclonal Antibody (Pab)
Catalog # AP18988a**Specification**

CALHM3 Antibody (N-term) - Product Information

Application	WB,E
Primary Accession	Q86XJ0
Other Accession	NP_001123214.1
Reactivity	Human
Host	Rabbit
Clonality	Polyclonal
Isotype	Rabbit IgG
Calculated MW	38496
Antigen Region	68-97

CALHM3 Antibody (N-term) - Additional Information**Gene ID** 119395**Other Names**

Calcium homeostasis modulator protein 3, Protein FAM26A, CALHM3, FAM26A

Target/Specificity

This CALHM3 antibody is generated from rabbits immunized with a KLH conjugated synthetic peptide between 68-97 amino acids from the N-terminal region of human CALHM3.

Dilution

WB~~1:1000

E~~Use at an assay dependent concentration.

Format

Purified polyclonal antibody supplied in PBS with 0.09% (W/V) sodium azide. This antibody is purified through a protein A column, followed by peptide affinity purification.

Storage

Maintain refrigerated at 2-8°C for up to 2 weeks. For long term storage store at -20°C in small aliquots to prevent freeze-thaw cycles.

Precautions

CALHM3 Antibody (N-term) is for research use only and not for use in diagnostic or therapeutic procedures.

CALHM3 Antibody (N-term) - Protein Information**Name** CALHM3 ([HGNC:23458](#))**Synonyms** FAM26A

Function Pore-forming subunit of gustatory voltage-gated ion channels required for sensory perception of sweet, bitter and umami tastes. With CALHM1 forms a fast-activating voltage-gated ATP-release channel in type II taste bud cells, ATP acting as a neurotransmitter to activate afferent neural gustatory pathways. Acts both as a voltage-gated and calcium-activated ion channel: mediates neuronal excitability in response to membrane depolarization and low extracellular Ca^{2+} concentration. Has poor ion selectivity and forms a wide pore (around 14 Angstroms) that mediates permeation of small ions including Ca^{2+} , Na^{+} , K^{+} and Cl^{-} , as well as larger ions such as ATP^{4-} .

Cellular Location

Basolateral cell membrane {ECO:0000250|UniProtKB:J3QMI4}; Multi-pass membrane protein

Tissue Location

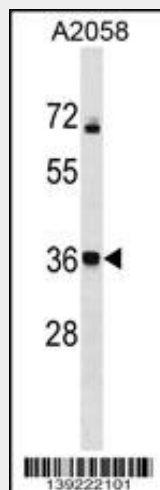
Specifically expressed in circumvallate taste bud cells.

CALHM3 Antibody (N-term) - Protocols

Provided below are standard protocols that you may find useful for product applications.

- [Western Blot](#)
- [Blocking Peptides](#)
- [Dot Blot](#)
- [Immunohistochemistry](#)
- [Immunofluorescence](#)
- [Immunoprecipitation](#)
- [Flow Cytometry](#)
- [Cell Culture](#)

CALHM3 Antibody (N-term) - Images



CALHM3 Antibody (N-term) (Cat. #AP18988a) western blot analysis in A2058 cell line lysates (35ug/lane). This demonstrates the CALHM3 antibody detected the CALHM3 protein (arrow).

CALHM3 Antibody (N-term) - Background

The specific function of CALHM3 remains unknown. There are two different isoforms generated by alternative splicing.

CALHM3 Antibody (N-term) - References

Shibata, N., et al. J. Alzheimers Dis. 20(2):417-421(2010)
Dreses-Werringloer, U., et al. Cell 133(7):1149-1161(2008)
Grupe, A., et al. Am. J. Hum. Genet. 78(1):78-88(2006)
Deloukas, P., et al. Nature 429(6990):375-381(2004)