

CATSPER2 Antibody (C-term)
Affinity Purified Rabbit Polyclonal Antibody (Pab)
Catalog # AP18998b**Specification**

CATSPER2 Antibody (C-term) - Product Information

Application	WB,E
Primary Accession	O96P56
Other Accession	NP_742095.1
Reactivity	Human
Host	Rabbit
Clonality	Polyclonal
Isotype	Rabbit IgG
Calculated MW	62041
Antigen Region	472-500

CATSPER2 Antibody (C-term) - Additional Information**Gene ID** 117155**Other Names**

Cation channel sperm-associated protein 2, CatSper2, CATSPER2

Target/Specificity

This CATSPER2 antibody is generated from rabbits immunized with a KLH conjugated synthetic peptide between 472-500 amino acids from the C-terminal region of human CATSPER2.

Dilution

WB~~1:1000

E~~Use at an assay dependent concentration.

Format

Purified polyclonal antibody supplied in PBS with 0.09% (W/V) sodium azide. This antibody is purified through a protein A column, followed by peptide affinity purification.

Storage

Maintain refrigerated at 2-8°C for up to 2 weeks. For long term storage store at -20°C in small aliquots to prevent freeze-thaw cycles.

Precautions

CATSPER2 Antibody (C-term) is for research use only and not for use in diagnostic or therapeutic procedures.

CATSPER2 Antibody (C-term) - Protein Information**Name** CATSPER2**Function** Pore-forming subunit of the CatSper complex, a sperm-specific voltage-gated calcium

channel, that plays a central role in calcium- dependent physiological responses essential for successful fertilization, such as sperm hyperactivation, acrosome reaction and chemotaxis towards the oocyte.

Cellular Location

Cell projection, cilium, flagellum membrane {ECO:0000250|UniProtKB:A2ARP9}; Multi-pass membrane protein {ECO:0000250|UniProtKB:A2ARP9}

Tissue Location

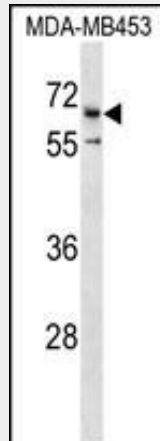
Testis-specific.

CATSPER2 Antibody (C-term) - Protocols

Provided below are standard protocols that you may find useful for product applications.

- [Western Blot](#)
- [Blocking Peptides](#)
- [Dot Blot](#)
- [Immunohistochemistry](#)
- [Immunofluorescence](#)
- [Immunoprecipitation](#)
- [Flow Cytometry](#)
- [Cell Culture](#)

CATSPER2 Antibody (C-term) - Images



CATSPER2 Antibody (C-term) (Cat. #AP18998b) western blot analysis in MDA-MB453 cell line lysates (35ug/lane). This demonstrates the CATSPER2 antibody detected the CATSPER2 protein (arrow).

CATSPER2 Antibody (C-term) - Background

Calcium ions play a primary role in the regulation of sperm motility. This gene belongs to a family of putative cation channels that are specific to spermatozoa and localize to the flagellum. The protein family features a single repeat with six membrane-spanning segments and a predicted calcium-selective pore region. This gene is part of a tandem repeat on chromosome 15q15; the second copy of this gene is thought to be a pseudogene. Additional splice variants have been described but their

full-length nature has not been determined.

CATSPER2 Antibody (C-term) - References

Rose, J.E., et al. Mol. Med. 16 (7-8), 247-253 (2010) :
Lamesch, P., et al. Genomics 89(3):307-315(2007)
Zhang, D., et al. J. Biol. Chem. 281(31):22332-22341(2006)
Clapham, D.E., et al. Pharmacol. Rev. 57(4):451-454(2005)
Quill, T.A., et al. Proc. Natl. Acad. Sci. U.S.A. 98(22):12527-12531(2001)