

PODXL Antibody (C-term)
Affinity Purified Rabbit Polyclonal Antibody (Pab)
Catalog # AP18999B

Specification

PODXL Antibody (C-term) - Product Information

Application	WB,E
Primary Accession	O00592
Other Accession	NP_005388.2
Reactivity	Human
Host	Rabbit
Clonality	Polyclonal
Isotype	Rabbit IgG
Calculated MW	58635
Antigen Region	410-439

PODXL Antibody (C-term) - Additional Information

Gene ID 5420

Other Names

Podocalyxin, GCTM-2 antigen, Gp200, Podocalyxin-like protein 1, PC, PCLP-1, PODXL, PCLP, PCLP1

Target/Specificity

This PODXL antibody is generated from rabbits immunized with a KLH conjugated synthetic peptide between 410-439 amino acids from the C-terminal region of human PODXL.

Dilution

WB~~1:1000

E~~Use at an assay dependent concentration.

Format

Purified polyclonal antibody supplied in PBS with 0.09% (W/V) sodium azide. This antibody is purified through a protein A column, followed by peptide affinity purification.

Storage

Maintain refrigerated at 2-8°C for up to 2 weeks. For long term storage store at -20°C in small aliquots to prevent freeze-thaw cycles.

Precautions

PODXL Antibody (C-term) is for research use only and not for use in diagnostic or therapeutic procedures.

PODXL Antibody (C-term) - Protein Information

Name PODXL

Synonyms PCLP, PCLP1

Function Involved in the regulation of both adhesion and cell morphology and cancer progression. Functions as an anti-adhesive molecule that maintains an open filtration pathway between neighboring foot processes in the podocyte by charge repulsion. Acts as a pro-adhesive molecule, enhancing the adherence of cells to immobilized ligands, increasing the rate of migration and cell-cell contacts in an integrin-dependent manner. Induces the formation of apical actin-dependent microvilli. Involved in the formation of a preapical plasma membrane subdomain to set up initial epithelial polarization and the apical lumen formation during renal tubulogenesis. Plays a role in cancer development and aggressiveness by inducing cell migration and invasion through its interaction with the actin-binding protein EZR. Affects EZR-dependent signaling events, leading to increased activities of the MAPK and PI3K pathways in cancer cells.

Cellular Location

Apical cell membrane. Cell projection, lamellipodium. Cell projection, filopodium. Cell projection, ruffle Cell projection, microvillus. Membrane raft. Membrane; Single-pass type I membrane protein. Note=In single attached epithelial cells is restricted to a preapical pole on the free plasma membrane whereas other apical and basolateral proteins are not yet polarized Colocalizes with NHERF2 at the apical plasma membrane during epithelial polarization. Colocalizes with NHERF1 at the trans-Golgi network (transiently) and at the apical plasma membrane. Its association with the membrane raft is transient. Colocalizes with actin filaments, EZR and NHERF1 in a punctate pattern at the apical cell surface where microvilli form. Colocalizes with EZR and NHERF2 at the apical cell membrane of glomerular epithelium cells (By similarity). Forms granular, punctuated pattern, forming patches, preferentially adopting a polar distribution, located on the migrating poles of the cell or forming clusters along the terminal ends of filopodia establishing contact with the endothelial cells. Colocalizes with the submembrane actin of lamellipodia, particularly associated with ruffles Colocalizes with vinculin at protrusions of cells. Colocalizes with ITGB1. Colocalizes with PARD3, PRKCI, EXOC5, OCLN, RAB11A and RAB8A in apical membrane initiation sites (AMIS) during the generation of apical surface and luminogenesis (By similarity).

Tissue Location

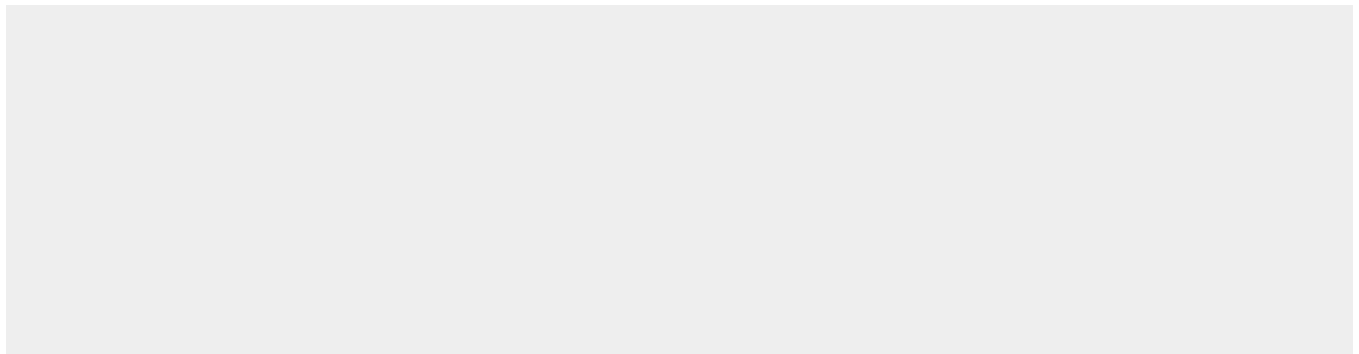
Glomerular epithelium cell (podocyte).

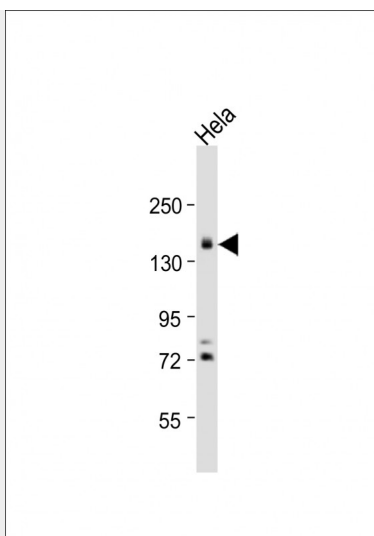
PODXL Antibody (C-term) - Protocols

Provided below are standard protocols that you may find useful for product applications.

- [Western Blot](#)
- [Blocking Peptides](#)
- [Dot Blot](#)
- [Immunohistochemistry](#)
- [Immunofluorescence](#)
- [Immunoprecipitation](#)
- [Flow Cytometry](#)
- [Cell Culture](#)

PODXL Antibody (C-term) - Images





Anti-PODXL Antibody (C-term) at 1:1000 dilution + HeLa whole cell lysate Lysates/proteins at 20 µg per lane. Secondary Goat Anti-Rabbit IgG, (H+L), Peroxidase conjugated at 1/10000 dilution. Predicted band size : 59 kDa Blocking/Dilution buffer: 5% NFDM/TBST.

PODXL Antibody (C-term) - Background

This gene encodes a member of the sialomucin protein family. The encoded protein was originally identified as an important component of glomerular podocytes. Podocytes are highly differentiated epithelial cells with interdigitating foot processes covering the outer aspect of the glomerular basement membrane. Other biological activities of the encoded protein include: binding in a membrane protein complex with Na⁺/H⁺ exchanger regulatory factor to intracellular cytoskeletal elements, playing a role in hematopoietic cell differentiation, and being expressed in vascular endothelium cells and binding to L-selectin.

PODXL Antibody (C-term) - References

Schopperle, W.M., et al. Biochem. Biophys. Res. Commun. 398(3):372-376(2010)
Hsu, Y.H., et al. Am. J. Pathol. 176(6):3050-3061(2010)
Johnatty, S.E., et al. PLoS Genet. 6 (7), E1001016 (2010) :
Drossopoulou, G.I., et al. Am. J. Physiol. Renal Physiol. 297 (3), F594-F603 (2009) :
Thomas, S.N., et al. Am. J. Physiol., Cell Physiol. 296 (3), C505-C513 (2009) :