

SSTR5 Antibody (C-term)
Affinity Purified Rabbit Polyclonal Antibody (Pab)
Catalog # AP19004b**Specification**

SSTR5 Antibody (C-term) - Product Information

Application	WB,E
Primary Accession	P35346
Other Accession	NP_001044.1
Reactivity	Human
Host	Rabbit
Clonality	Polyclonal
Isotype	Rabbit IgG
Calculated MW	39202
Antigen Region	311-339

SSTR5 Antibody (C-term) - Additional Information**Gene ID** 6755**Other Names**

Somatostatin receptor type 5, SS-5-R, SS5-R, SS5R, SSTR5

Target/Specificity

This SSTR5 antibody is generated from rabbits immunized with a KLH conjugated synthetic peptide between 311-339 amino acids from the C-terminal region of human SSTR5.

Dilution

WB~~1:1000

E~~Use at an assay dependent concentration.

Format

Purified polyclonal antibody supplied in PBS with 0.09% (W/V) sodium azide. This antibody is purified through a protein A column, followed by peptide affinity purification.

Storage

Maintain refrigerated at 2-8°C for up to 2 weeks. For long term storage store at -20°C in small aliquots to prevent freeze-thaw cycles.

Precautions

SSTR5 Antibody (C-term) is for research use only and not for use in diagnostic or therapeutic procedures.

SSTR5 Antibody (C-term) - Protein Information**Name** SSTR5**Function** Receptor for somatostatin 28 and to a lesser extent for somatostatin-14. The activity of

this receptor is mediated by G proteins which inhibit adenylyl cyclase. Increases cell growth inhibition activity of SSTR2 following heterodimerization.

Cellular Location

Cell membrane; Multi-pass membrane protein.

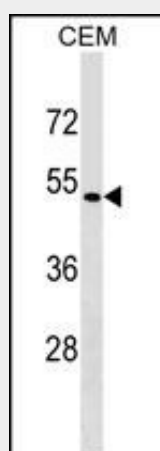
Tissue Location

Adult pituitary gland, heart, small intestine, adrenal gland, cerebellum and fetal hypothalamus. No expression in fetal or adult kidney, liver, pancreas, uterus, spleen, lung, thyroid or ovary.

SSTR5 Antibody (C-term) - Protocols

Provided below are standard protocols that you may find useful for product applications.

- [Western Blot](#)
- [Blocking Peptides](#)
- [Dot Blot](#)
- [Immunohistochemistry](#)
- [Immunofluorescence](#)
- [Immunoprecipitation](#)
- [Flow Cytometry](#)
- [Cell Culture](#)

SSTR5 Antibody (C-term) - Images

SSTR5 Antibody (C-term) (Cat. #AP19004b) western blot analysis in CEM cell line lysates (35ug/lane). This demonstrates the SSTR5 antibody detected the SSTR5 protein (arrow).

SSTR5 Antibody (C-term) - Background

Somatostatin and its related peptide cortistatin exert multiple biological actions on normal and tumoral tissue targets by interacting with somatostatin receptors (SSTRs). The protein encoded by this gene is one of the SSTRs, which is a multi-pass membrane protein and belongs to the G-protein coupled receptor 1 family. The activity of this receptor is mediated by G proteins which inhibit adenylyl cyclase, and different regions of this receptor molecule are required for the activation of different signaling pathways. A mutation in this gene results in somatostatin analog resistance. Alternatively spliced transcript variants have

been identified in this gene.

SSTR5 Antibody (C-term) - References

Canzian, F., et al. Hum. Mol. Genet. 19(19):3873-3884(2010)
Saus, E., et al. J Psychiatr Res 44(14):971-978(2010)
Pinheiro, A.P., et al. Am. J. Med. Genet. B Neuropsychiatr. Genet. 153B (5), 1070-1080 (2010) :
Duran-Prado, M., et al. J. Clin. Endocrinol. Metab. 95(5):2497-2502(2010)
Pisarek, H., et al. Folia Histochem. Cytobiol. 48(1):142-147(2010)