

**MFI2 Antibody (C-term)**  
**Affinity Purified Rabbit Polyclonal Antibody (Pab)**  
**Catalog # AP19007B****Specification**

---

**MFI2 Antibody (C-term) - Product Information**

Application	WB,E
Primary Accession	<a href="#">P08582</a>
Other Accession	<a href="#">O97490</a> , <a href="#">O9R0R1</a> , <a href="#">NP_005920.2</a>
Reactivity	Human
Predicted	Mouse, Rabbit
Host	Rabbit
Clonality	Polyclonal
Isotype	Rabbit IgG
Calculated MW	80215
Antigen Region	627-655

**MFI2 Antibody (C-term) - Additional Information****Gene ID** 4241**Other Names**

Melanotransferrin, Melanoma-associated antigen p97, CD228, MFI2, MAP97

**Target/Specificity**

This MFI2 antibody is generated from rabbits immunized with a KLH conjugated synthetic peptide between 627-655 amino acids from the C-terminal region of human MFI2.

**Dilution**

WB~~1:1000

E~~Use at an assay dependent concentration.

**Format**

Purified polyclonal antibody supplied in PBS with 0.09% (W/V) sodium azide. This antibody is purified through a protein A column, followed by peptide affinity purification.

**Storage**

Maintain refrigerated at 2-8°C for up to 2 weeks. For long term storage store at -20°C in small aliquots to prevent freeze-thaw cycles.

**Precautions**

MFI2 Antibody (C-term) is for research use only and not for use in diagnostic or therapeutic procedures.

**MFI2 Antibody (C-term) - Protein Information****Name** MELTF ([HGNC:7037](#))

**Synonyms** MAP97, MFI2

**Function** Involved in iron cellular uptake. Seems to be internalized and then recycled back to the cell membrane. Binds a single atom of iron per subunit. Could also bind zinc.

**Cellular Location**

[Isoform 1]: Cell membrane; Lipid-anchor, GPI- anchor

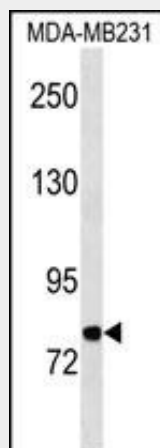
**Tissue Location**

Found predominantly in human melanomas and in certain fetal tissues; also found in liver, epithelium, umbilical chord, placenta and sweat gland ducts

**MFI2 Antibody (C-term) - Protocols**

Provided below are standard protocols that you may find useful for product applications.

- [Western Blot](#)
- [Blocking Peptides](#)
- [Dot Blot](#)
- [Immunohistochemistry](#)
- [Immunofluorescence](#)
- [Immunoprecipitation](#)
- [Flow Cytometry](#)
- [Cell Culture](#)

**MFI2 Antibody (C-term) - Images**

MFI2 Antibody (C-term) (Cat. #AP19007b) western blot analysis in MDA-MB231 cell line lysates (35ug/lane). This demonstrates the MFI2 antibody detected the MFI2 protein (arrow).

**MFI2 Antibody (C-term) - Background**

The protein encoded by this gene is a cell-surface glycoprotein found on melanoma cells. The protein shares sequence similarity and iron-binding properties with members of the transferrin superfamily. The importance of the iron binding function has not yet been identified. This gene resides in the same region of chromosome 3 as members of the transferrin superfamily. Alternative splicing results in two transcript variants. [provided by RefSeq].

**MFI2 Antibody (C-term) - References**

Wang, M., et al. J. Biol. Chem. 284(48):33377-33383(2009)  
Farnaud, S., et al. Int. J. Biochem. Cell Biol. 40(12):2739-2745(2008)  
Suryo Rahmanto, Y., et al. Carcinogenesis 28(10):2172-2183(2007)  
Suryo Rahmanto, Y., et al. Oncogene 26(42):6113-6124(2007)  
Michaud-Levesque, J., et al. Biol. Chem. 388(7):747-754(2007)