

OOSP1 Antibody (C-term)
Affinity Purified Rabbit Polyclonal Antibody (Pab)
Catalog # AP19020b**Specification**

OOSP1 Antibody (C-term) - Product Information

Application	WB,E
Primary Accession	A8MZH6
Reactivity	Human
Host	Rabbit
Clonality	Polyclonal
Isotype	Rabbit IgG
Calculated MW	14433
Antigen Region	82-108

OOSP1 Antibody (C-term) - Additional Information**Other Names**

Putative oocyte-secreted protein 1 homolog, OOSP1

Target/Specificity

This OOSP1 antibody is generated from rabbits immunized with a KLH conjugated synthetic peptide between 82-108 amino acids from the C-terminal region of human OOSP1.

Dilution

WB~~1:1000

E~~Use at an assay dependent concentration.

Format

Purified polyclonal antibody supplied in PBS with 0.09% (W/V) sodium azide. This antibody is purified through a protein A column, followed by peptide affinity purification.

Storage

Maintain refrigerated at 2-8°C for up to 2 weeks. For long term storage store at -20°C in small aliquots to prevent freeze-thaw cycles.

Precautions

OOSP1 Antibody (C-term) is for research use only and not for use in diagnostic or therapeutic procedures.

OOSP1 Antibody (C-term) - Protein Information

Name OOSP1

Function May be involved in cell differentiation.

Cellular Location

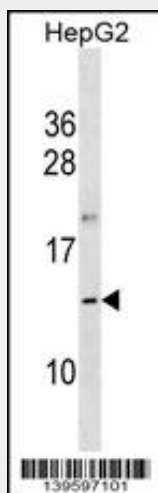
Secreted.

OOSP1 Antibody (C-term) - Protocols

Provided below are standard protocols that you may find useful for product applications.

- [Western Blot](#)
- [Blocking Peptides](#)
- [Dot Blot](#)
- [Immunohistochemistry](#)
- [Immunofluorescence](#)
- [Immunoprecipitation](#)
- [Flow Cytometry](#)
- [Cell Culture](#)

OOSP1 Antibody (C-term) - Images



OOSP1 Antibody (C-term) (Cat. #AP19020b) western blot analysis in HepG2 cell line lysates (35ug/lane). This demonstrates the OOSP1 antibody detected the OOSP1 protein (arrow).

OOSP1 Antibody (C-term) - Background

OOSP1 may be involved in cell differentiation (By similarity).