

RAB8B Antibody (C-term)
Affinity Purified Rabbit Polyclonal Antibody (Pab)
Catalog # AP19030b**Specification**

RAB8B Antibody (C-term) - Product Information

Application	WB,E
Primary Accession	O92930
Other Accession	O2HJI8 , NP_057614.1
Reactivity	Human
Predicted	Bovine
Host	Rabbit
Clonality	Polyclonal
Isotype	Rabbit IgG
Calculated MW	23584
Antigen Region	172-198

RAB8B Antibody (C-term) - Additional Information**Gene ID** 51762**Other Names**

Ras-related protein Rab-8B, RAB8B

Target/Specificity

This RAB8B antibody is generated from rabbits immunized with a KLH conjugated synthetic peptide between 172-198 amino acids from the C-terminal region of human RAB8B.

Dilution

WB~~1:1000

E~~Use at an assay dependent concentration.

Format

Purified polyclonal antibody supplied in PBS with 0.09% (W/V) sodium azide. This antibody is purified through a protein A column, followed by peptide affinity purification.

Storage

Maintain refrigerated at 2-8°C for up to 2 weeks. For long term storage store at -20°C in small aliquots to prevent freeze-thaw cycles.

Precautions

RAB8B Antibody (C-term) is for research use only and not for use in diagnostic or therapeutic procedures.

RAB8B Antibody (C-term) - Protein Information**Name** RAB8B ([HGNC:30273](#))

Function The small GTPases Rab are key regulators of intracellular membrane trafficking, from the formation of transport vesicles to their fusion with membranes. Rabs cycle between an inactive GDP-bound form and an active GTP-bound form that is able to recruit to membranes different sets of downstream effectors directly responsible for vesicle formation, movement, tethering and fusion (By similarity). RAB8B may be involved in polarized vesicular trafficking and neurotransmitter release (Probable). May participate in cell junction dynamics in Sertoli cells (By similarity). May also participate in the export of a subset of neosynthesized proteins through a Rab8-Rab10-Rab11-dependent endosomal export route (PubMed:[32344433](#)).

Cellular Location

Cell membrane; Lipid-anchor; Cytoplasmic side. Cytoplasmic vesicle, phagosome. Cytoplasmic vesicle, phagosome membrane; Lipid-anchor; Cytoplasmic side. Endosome membrane.

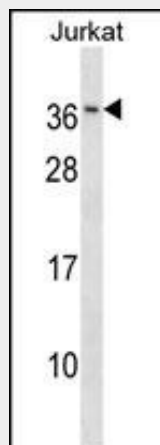
Note=Recruited to phagosomes containing *S.aureus* or *M.tuberculosis*. Colocalized with MICAL1, GRAF1/ARHGAP26 and GRAF2/ARHGAP10 on endosomal tubules (PubMed:[32344433](#))

RAB8B Antibody (C-term) - Protocols

Provided below are standard protocols that you may find useful for product applications.

- [Western Blot](#)
- [Blocking Peptides](#)
- [Dot Blot](#)
- [Immunohistochemistry](#)
- [Immunofluorescence](#)
- [Immunoprecipitation](#)
- [Flow Cytometry](#)
- [Cell Culture](#)

RAB8B Antibody (C-term) - Images



RAB8B Antibody (C-term) (Cat. #AP19030b) western blot analysis in Jurkat cell line lysates (35ug/lane). This demonstrates the RAB8B antibody detected the RAB8B protein (arrow).

RAB8B Antibody (C-term) - Background

RAB proteins, like RAB8B, are low molecular mass monomeric GTPases that localize on the cytoplasmic surfaces of distinct membrane-bound organelles. RAB proteins function in intracellular vesicle transport by aiding in the docking and/or fusion of vesicles with their target membranes (summary by Chen et al., 1997)

[PubMed 9030196]].

RAB8B Antibody (C-term) - References

Heidrych, P., et al. Hum. Mol. Genet. 17(23):3814-3821(2008)
Wu, C., et al. Proteomics 7(11):1775-1785(2007)
Lamesch, P., et al. Genomics 89(3):307-315(2007)
Lau, A.S., et al. Endocrinology 144(4):1549-1563(2003)
Hattula, K., et al. Mol. Biol. Cell 13(9):3268-3280(2002)