

RBMXL1 Antibody (Center)
Affinity Purified Rabbit Polyclonal Antibody (Pab)
Catalog # AP19032c**Specification**

RBMXL1 Antibody (Center) - Product Information

Application	WB,E
Primary Accession	Q96E39
Other Accession	P84586 , D4AE41 , Q91VM5 , NP_001156008.1
Reactivity	Human
Predicted	Mouse, Rat
Host	Rabbit
Clonality	Polyclonal
Isotype	Rabbit IgG
Calculated MW	42142
Antigen Region	237-263

RBMXL1 Antibody (Center) - Additional Information**Gene ID** 494115**Other Names**

RNA binding motif protein, X-linked-like-1, Heterogeneous nuclear ribonucleoprotein G-like 1, RBMXL1

Target/Specificity

This RBMXL1 antibody is generated from rabbits immunized with a KLH conjugated synthetic peptide between 237-263 amino acids from the Central region of human RBMXL1.

Dilution

WB~~1:1000

E~~Use at an assay dependent concentration.

Format

Purified polyclonal antibody supplied in PBS with 0.09% (W/V) sodium azide. This antibody is purified through a protein A column, followed by peptide affinity purification.

Storage

Maintain refrigerated at 2-8°C for up to 2 weeks. For long term storage store at -20°C in small aliquots to prevent freeze-thaw cycles.

Precautions

RBMXL1 Antibody (Center) is for research use only and not for use in diagnostic or therapeutic procedures.

RBMXL1 Antibody (Center) - Protein Information**Name** RBMXL1

Function RNA-binding protein which may be involved in pre-mRNA splicing.

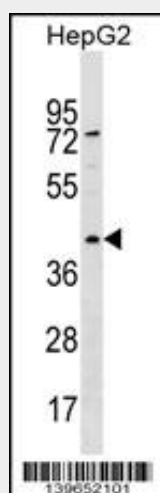
Cellular Location
Nucleus.

RBMXL1 Antibody (Center) - Protocols

Provided below are standard protocols that you may find useful for product applications.

- [Western Blot](#)
- [Blocking Peptides](#)
- [Dot Blot](#)
- [Immunohistochemistry](#)
- [Immunofluorescence](#)
- [Immunoprecipitation](#)
- [Flow Cytometry](#)
- [Cell Culture](#)

RBMXL1 Antibody (Center) - Images



RBMXL1 Antibody (Center) (Cat. #AP19032c) western blot analysis in HepG2 cell line lysates (35ug/lane). This demonstrates the RBMXL1 antibody detected the RBMXL1 protein (arrow).

RBMXL1 Antibody (Center) - Background

This gene represents a retrogene of RNA binding motif protein, X-linked (RBMX), which is located on chromosome X. While all introns in the coding sequence have been processed out compared to the RBMX locus, the ORF is intact and there is specific evidence for transcription at this location. The preservation of the ORF by purifying selection in all Old World monkeys carrying it suggests that this locus is likely to be functional, possibly during male meiosis when X chromosomal genes are silenced or during haploid stages of spermatogenesis. This gene shares 5' exon structure with the cysteine conjugate-beta lyase 2 locus on chromosome 1, but the coding sequences are non-overlapping. Alternative splicing results in two transcript variants.

RBMXL1 Antibody (Center) - References

Martins-de-Souza, D., et al. Eur Arch Psychiatry Clin Neurosci 259(3):151-163(2009)
Marques, A.C., et al. PLoS Biol. 3 (11), E357 (2005) :
Emerson, J.J., et al. Science 303(5657):537-540(2004)