

RPS17L Antibody (Center)
Affinity Purified Rabbit Polyclonal Antibody (Pab)
Catalog # AP19045c

Specification

RPS17L Antibody (Center) - Product Information

Application	WB,E
Primary Accession	P0CW22
Other Accession	P04644 , Q6QAP7 , P63276 , P08708 , P63274 , P08636 , A5PK63 , NP_001012.1 , G1TU13
Reactivity	Human
Predicted	Bovine, Chicken, Hamster, Mouse, Pig, Rabbit, Rat
Host	Rabbit
Clonality	Polyclonal
Isotype	Rabbit IgG
Antigen Region	77-103

RPS17L Antibody (Center) - Additional Information

Other Names

40S ribosomal protein S17-like, RPS17L

Target/Specificity

This RPS17L antibody is generated from rabbits immunized with a KLH conjugated synthetic peptide between 77-103 amino acids from the Central region of human RPS17L.

Dilution

WB~~1:1000

E~~Use at an assay dependent concentration.

Format

Purified polyclonal antibody supplied in PBS with 0.09% (W/V) sodium azide. This antibody is purified through a protein A column, followed by peptide affinity purification.

Storage

Maintain refrigerated at 2-8°C for up to 2 weeks. For long term storage store at -20°C in small aliquots to prevent freeze-thaw cycles.

Precautions

RPS17L Antibody (Center) is for research use only and not for use in diagnostic or therapeutic procedures.

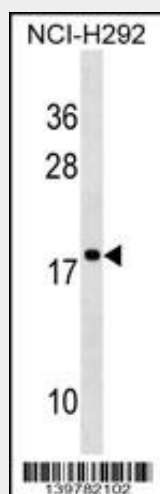
RPS17L Antibody (Center) - Protein Information

RPS17L Antibody (Center) - Protocols

Provided below are standard protocols that you may find useful for product applications.

- [Western Blot](#)
- [Blocking Peptides](#)
- [Dot Blot](#)
- [Immunohistochemistry](#)
- [Immunofluorescence](#)
- [Immunoprecipitation](#)
- [Flow Cytometry](#)
- [Cell Culture](#)

RPS17L Antibody (Center) - Images



RPS17L Antibody (Center) (Cat. #AP19045c) western blot analysis in NCI-H292 cell line lysates (35ug/lane). This demonstrates the RPS17L antibody detected the RPS17L protein (arrow).

RPS17L Antibody (Center) - Background

Ribosomes, the organelles that catalyze protein synthesis, consist of a small 40S subunit and a large 60S subunit. Together these subunits are composed of 4 RNA species and approximately 80 structurally distinct proteins. This gene encodes a ribosomal protein that is a component of the 40S subunit. The protein belongs to the S17E family of ribosomal proteins. It is located in the cytoplasm. As is typical for genes encoding ribosomal proteins, there are multiple processed pseudogenes of this gene dispersed through the genome.

RPS17L Antibody (Center) - References

Konno, Y., et al. Haematologica 95(8):1293-1299(2010)
Gazda, H.T., et al. Am. J. Hum. Genet. 83(6):769-780(2008)
Robledo, S., et al. RNA 14(9):1918-1929(2008)
Campagnoli, M.F., et al. Hum. Mutat. 29(7):911-920(2008)
Cmejla, R., et al. Hum. Mutat. 28(12):1178-1182(2007)