

RREB1 Antibody (C-term)
Affinity Purified Rabbit Polyclonal Antibody (Pab)
Catalog # AP19046b**Specification**

RREB1 Antibody (C-term) - Product Information

Application	WB,E
Primary Accession	O92766
Other Accession	NP_001003698.1
Reactivity	Human
Host	Rabbit
Clonality	Polyclonal
Isotype	Rabbit IgG
Antigen Region	1398-1424

RREB1 Antibody (C-term) - Additional Information**Gene ID** 6239**Other Names**

Ras-responsive element-binding protein 1, RREB-1, Finger protein in nuclear bodies, Raf-responsive zinc finger protein LZ321, Zinc finger motif enhancer-binding protein 1, Zep-1, RREB1, FINB

Target/Specificity

This RREB1 antibody is generated from rabbits immunized with a KLH conjugated synthetic peptide between 1398-1424 amino acids from the C-terminal region of human RREB1.

Dilution

WB~~1:1000

Format

Purified polyclonal antibody supplied in PBS with 0.09% (W/V) sodium azide. This antibody is purified through a protein A column, followed by peptide affinity purification.

Storage

Maintain refrigerated at 2-8°C for up to 2 weeks. For long term storage store at -20°C in small aliquots to prevent freeze-thaw cycles.

Precautions

RREB1 Antibody (C-term) is for research use only and not for use in diagnostic or therapeutic procedures.

RREB1 Antibody (C-term) - Protein Information**Name** RREB1**Synonyms** FINB

Function Transcription factor that binds specifically to the RAS- responsive elements (RRE) of gene promoters (PubMed:[9305772](#), PubMed:[15067362](#), PubMed:[8816445](#), PubMed:[10390538](#), PubMed:[17550981](#)). Represses the angiotensinogen gene (PubMed:[15067362](#)). Negatively regulates the transcriptional activity of AR (PubMed:[17550981](#)). Potentiates the transcriptional activity of NEUROD1 (PubMed:[12482979](#)). Promotes brown adipocyte differentiation (By similarity). May be involved in Ras/Raf-mediated cell differentiation by enhancing calcitonin expression (PubMed:[8816445](#)).

Cellular Location

Nucleus speckle

Tissue Location

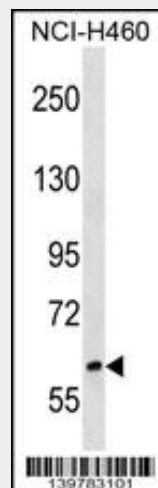
Expressed in heart, placenta, lung, liver, skeletal muscle, kidney and pancreas. Not found in the brain

RREB1 Antibody (C-term) - Protocols

Provided below are standard protocols that you may find useful for product applications.

- [Western Blot](#)
- [Blocking Peptides](#)
- [Dot Blot](#)
- [Immunohistochemistry](#)
- [Immunofluorescence](#)
- [Immunoprecipitation](#)
- [Flow Cytometry](#)
- [Cell Culture](#)

RREB1 Antibody (C-term) - Images



RREB1 Antibody (C-term) (Cat. #AP19046b) western blot analysis in NCI-H460 cell line lysates (35ug/lane). This demonstrates the RREB1 antibody detected the RREB1 protein (arrow).

RREB1 Antibody (C-term) - Background

The protein encoded by this gene is a zinc finger transcription factor that binds to RAS-responsive elements (RREs) of gene promoters. It has been shown that the calcitonin gene promoter contains an RRE and that the encoded protein binds there

and increases expression of calcitonin, which may be involved in Ras/Raf-mediated cell differentiation. Multiple transcript variants encoding several different isoforms have been found for this gene.

RREB1 Antibody (C-term) - References

Rose, J.E., et al. Mol. Med. 16 (7-8), 247-253 (2010) :
Neale, B.M., et al. Proc. Natl. Acad. Sci. U.S.A. 107(16):7395-7400(2010)
Milon, B.C., et al. Prostate 70(3):288-296(2010)
Flajollet, S., et al. J. Immunol. 183(11):6948-6959(2009)
Liu, H., et al. Biochem. J. 422(3):543-551(2009)