

RRP1 Antibody (Center)
Affinity Purified Rabbit Polyclonal Antibody (Pab)
Catalog # AP19047C**Specification**

RRP1 Antibody (Center) - Product Information

Application	WB,E
Primary Accession	P56182
Other Accession	P56183 , NP_003674.1
Reactivity	Human
Predicted	Mouse
Host	Rabbit
Clonality	Polyclonal
Isotype	Rabbit IgG
Calculated MW	52839
Antigen Region	298-326

RRP1 Antibody (Center) - Additional Information**Gene ID** 8568**Other Names**

Ribosomal RNA processing protein 1 homolog A, Novel nuclear protein 1, NNP-1, Nucleolar protein Nop52, RRP1-like protein, RRP1, D21S2056E, NNP1, NOP52, RRP1A

Target/Specificity

This RRP1 antibody is generated from rabbits immunized with a KLH conjugated synthetic peptide between 298-326 amino acids from the Central region of human RRP1.

Dilution

WB~~1:1000

Format

Purified polyclonal antibody supplied in PBS with 0.09% (W/V) sodium azide. This antibody is purified through a protein A column, followed by peptide affinity purification.

Storage

Maintain refrigerated at 2-8°C for up to 2 weeks. For long term storage store at -20°C in small aliquots to prevent freeze-thaw cycles.

Precautions

RRP1 Antibody (Center) is for research use only and not for use in diagnostic or therapeutic procedures.

RRP1 Antibody (Center) - Protein Information**Name** RRP1

Synonyms D21S2056E, NNP1, NOP52, RRP1A

Function Plays a critical role in the generation of 28S rRNA.

Cellular Location

Nucleus, nucleolus

Tissue Location

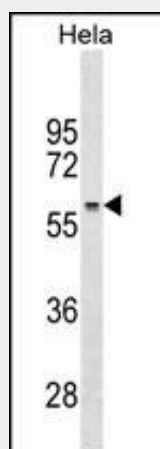
Ubiquitously expressed in fetal and adult tissues.

RRP1 Antibody (Center) - Protocols

Provided below are standard protocols that you may find useful for product applications.

- [Western Blot](#)
- [Blocking Peptides](#)
- [Dot Blot](#)
- [Immunohistochemistry](#)
- [Immunofluorescence](#)
- [Immunoprecipitation](#)
- [Flow Cytometry](#)
- [Cell Culture](#)

RRP1 Antibody (Center) - Images



RRP1 Antibody (Center) (Cat. #AP19047c) western blot analysis in HeLa cell line lysates (35ug/lane). This demonstrates the RRP1 antibody detected the RRP1 protein (arrow).

RRP1 Antibody (Center) - Background

The protein encoded by this gene is the putative homolog of the yeast ribosomal RNA processing protein RRP1. The encoded protein is involved in the late stages of nucleologenesis at the end of mitosis, and may be required for the generation of 28S rRNA.

RRP1 Antibody (Center) - References

Chapuis, J., et al. Mol. Psychiatry 14(11):1004-1016(2009)
Olsen, J.V., et al. Cell 127(3):635-648(2006)
Hu, Y.H., et al. BMC Genomics 7, 155 (2006) :

Scherl, A., et al. Mol. Biol. Cell 13(11):4100-4109(2002)
Behrends, U., et al. Int. J. Cancer 100(6):669-677(2002)