

**SCUBE3 Antibody (Center)**  
**Affinity Purified Rabbit Polyclonal Antibody (Pab)**  
**Catalog # AP19055C****Specification**

---

**SCUBE3 Antibody (Center) - Product Information**

Application	WB,E
Primary Accession	<a href="#">Q8IX30</a>
Other Accession	<a href="#">NP_689966.2</a>
Reactivity	Human, Mouse
Host	Rabbit
Clonality	Polyclonal
Isotype	Rabbit IgG
Calculated MW	109282
Antigen Region	480-509

**SCUBE3 Antibody (Center) - Additional Information****Gene ID** 222663**Other Names**

Signal peptide, CUB and EGF-like domain-containing protein 3, SCUBE3 (<a href="http://www.genenames.org/cgi-bin/gene\_symbol\_report?hgnc\_id=13655" target="\_blank">HGNC:13655</a>)

**Target/Specificity**

This SCUBE3 antibody is generated from rabbits immunized with a KLH conjugated synthetic peptide between 480-509 amino acids from the Central region of human SCUBE3.

**Dilution**

WB~~1:1000

E~~Use at an assay dependent concentration.

**Format**

Purified polyclonal antibody supplied in PBS with 0.09% (W/V) sodium azide. This antibody is purified through a protein A column, followed by peptide affinity purification.

**Storage**

Maintain refrigerated at 2-8°C for up to 2 weeks. For long term storage store at -20°C in small aliquots to prevent freeze-thaw cycles.

**Precautions**

SCUBE3 Antibody (Center) is for research use only and not for use in diagnostic or therapeutic procedures.

**SCUBE3 Antibody (Center) - Protein Information****Name** SCUBE3 ([HGNC:13655](#))

**Function** Is a positive regulator of the BMP signaling pathway, required for proper chondrogenesis, osteogenesis and skeletal development. It acts as a coreceptor for BMP ligands, particularly BMP2 and BMP4, facilitating their interactions with BMP type I receptors (PubMed:[33308444](#)). It is required for ligand-induced recruitment of BMP receptors to lipid rafts (By similarity). Binds to TGFBR2 and activates TGFB signaling. In lung cancer cells, could serve as an endogenous autocrine and paracrine ligand of TGFBR2, which could regulate TGFBR2 signaling and hence modulate epithelial-mesenchymal transition and cancer progression.

**Cellular Location**

Secreted. Cell surface

**Tissue Location**

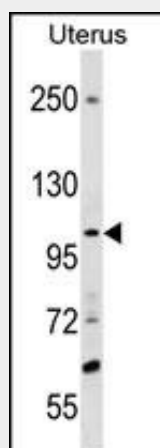
Highly expressed in osteoblasts. In normal lung, mainly expressed in bronchial epithelial cells. Tends to be up- regulated in lung cancer cells.

**SCUBE3 Antibody (Center) - Protocols**

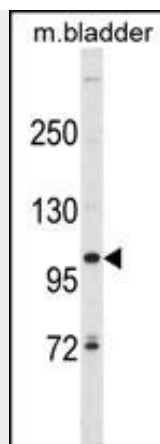
Provided below are standard protocols that you may find useful for product applications.

- [Western Blot](#)
- [Blocking Peptides](#)
- [Dot Blot](#)
- [Immunohistochemistry](#)
- [Immunofluorescence](#)
- [Immunoprecipitation](#)
- [Flow Cytometry](#)
- [Cell Culture](#)

**SCUBE3 Antibody (Center) - Images**



SCUBE3 Antibody (Center) (Cat. #AP19055c) western blot analysis in Uterus tissue lysates (35ug/lane). This demonstrates the SCUBE3 antibody detected the SCUBE3 protein (arrow).



SCUBE3 Antibody (Center) (Cat. #AP19055c) western blot analysis in mouse bladder tissue lysates (35ug/lane). This demonstrates the SCUBE3 antibody detected the SCUBE3 protein (arrow).

#### **SCUBE3 Antibody (Center) - Background**

SCUBE3 contains one CUB domain and 9 EGF-like domains. It is highly expressed in primary osteoblasts and the long bones (humerus and femur) and expression is low or absent in non-bone tissues. It may play an important role in bone cell biology.

#### **SCUBE3 Antibody (Center) - References**

Zhao, J., et al. BMC Med. Genet. 11, 96 (2010) : Gudbjartsson, D.F., et al. Nat. Genet. 40(5):609-615(2008) Wu, B.T., et al. J. Biol. Chem. 279(36):37485-37490(2004) Mungall, A.J., et al. Nature 425(6960):805-811(2003) Yang, R.B., et al. J. Biol. Chem. 277(48):46364-46373(2002)