

GKN1 Antibody (C-term)
Affinity Purified Rabbit Polyclonal Antibody (Pab)
Catalog # AP19065b

Specification

GKN1 Antibody (C-term) - Product Information

Application	WB,E
Primary Accession	O9NS71
Other Accession	NP_062563.3
Reactivity	Human
Host	Rabbit
Clonality	Polyclonal
Isotype	Rabbit IgG
Calculated MW	20331
Antigen Region	124-150

GKN1 Antibody (C-term) - Additional Information

Gene ID 56287

Other Names

Gastroke-1, 18 kDa antrum mucosa protein, AMP-18, Protein CA11, GKN1, AMP18, CA11

Target/Specificity

This GKN1 antibody is generated from rabbits immunized with a KLH conjugated synthetic peptide between 124-150 amino acids from the C-terminal region of human GKN1.

Dilution

WB~~1:1000

Format

Purified polyclonal antibody supplied in PBS with 0.09% (W/V) sodium azide. This antibody is purified through a protein A column, followed by peptide affinity purification.

Storage

Maintain refrigerated at 2-8°C for up to 2 weeks. For long term storage store at -20°C in small aliquots to prevent freeze-thaw cycles.

Precautions

GKN1 Antibody (C-term) is for research use only and not for use in diagnostic or therapeutic procedures.

GKN1 Antibody (C-term) - Protein Information

Name GKN1

Synonyms AMP18, CA11

Function Has mitogenic activity and may be involved in maintaining the integrity of the gastric mucosal epithelium.

Cellular Location

Secreted. Cytoplasmic granule. Golgi apparatus. Note=Shows abundant granular cytoplasmic staining, with perinuclear accentuation suggestive of the Golgi apparatus.

Tissue Location

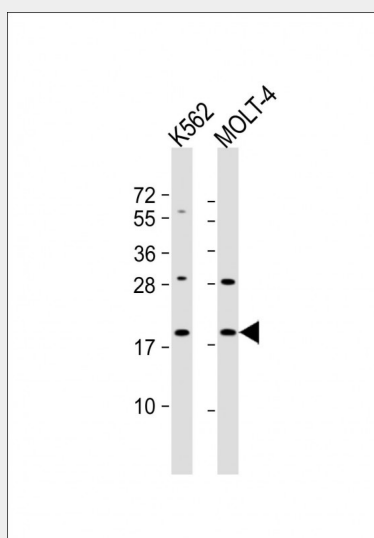
Expressed in stomach (at protein level). No expression is detected in cancer tissue or gastric cancer cell lines

GKN1 Antibody (C-term) - Protocols

Provided below are standard protocols that you may find useful for product applications.

- [Western Blot](#)
- [Blocking Peptides](#)
- [Dot Blot](#)
- [Immunohistochemistry](#)
- [Immunofluorescence](#)
- [Immunoprecipitation](#)
- [Flow Cytometry](#)
- [Cell Culture](#)

GKN1 Antibody (C-term) - Images



All lanes : Anti-GKN1 Antibody (C-term) at 1:1000 dilution Lane 1: K562 whole cell lysate Lane 2: MOLT-4 whole cell lysate Lysates/proteins at 20 µg per lane. Secondary Goat Anti-Rabbit IgG, (H+L), Peroxidase conjugated at 1/10000 dilution. Predicted band size : 22 kDa Blocking/Dilution buffer: 5% NFDM/TBST.

GKN1 Antibody (C-term) - Background

The protein encoded by this gene is found to be down-regulated in human gastric cancer tissue as compared to normal gastric mucosa.

GKN1 Antibody (C-term) - References

Rose, J.E., et al. Mol. Med. 16 (7-8), 247-253 (2010) :
Broderick, P., et al. Cancer Res. 69(16):6633-6641(2009)
Nardone, G., et al. Cancer Biol. Ther. 7(12):1890-1895(2008)
Moss, S.F., et al. Clin. Cancer Res. 14(13):4161-4167(2008)
Lamesch, P., et al. Genomics 89(3):307-315(2007)