

SPANXE Antibody (Center)
Affinity Purified Rabbit Polyclonal Antibody (Pab)
Catalog # AP19072c

Specification

SPANXE Antibody (Center) - Product Information

Application	WB,E
Primary Accession	Q8TAD1
Other Accession	Q9NY87 , Q9NS25 , NP_663698.1
Reactivity	Human
Host	Rabbit
Clonality	Polyclonal
Isotype	Rabbit IgG
Antigen Region	39-65

SPANXE Antibody (Center) - Additional Information

Other Names

Sperm protein associated with the nucleus on the X chromosome E, Nuclear-associated protein SPAN-Xe, SPANX-E, SPANX family member E, SPANXE

Target/Specificity

This SPANXE antibody is generated from rabbits immunized with a KLH conjugated synthetic peptide between 39-65 amino acids from the Central region of human SPANXE.

Dilution

WB~~1:1000

E~~Use at an assay dependent concentration.

Format

Purified polyclonal antibody supplied in PBS with 0.09% (W/V) sodium azide. This antibody is purified through a protein A column, followed by peptide affinity purification.

Storage

Maintain refrigerated at 2-8°C for up to 2 weeks. For long term storage store at -20°C in small aliquots to prevent freeze-thaw cycles.

Precautions

SPANXE Antibody (Center) is for research use only and not for use in diagnostic or therapeutic procedures.

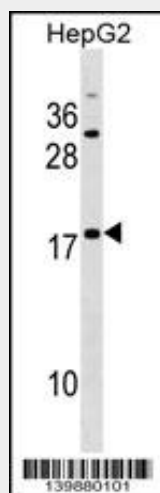
SPANXE Antibody (Center) - Protein Information

SPANXE Antibody (Center) - Protocols

Provided below are standard protocols that you may find useful for product applications.

- [Western Blot](#)
- [Blocking Peptides](#)
- [Dot Blot](#)
- [Immunohistochemistry](#)
- [Immunofluorescence](#)
- [Immunoprecipitation](#)
- [Flow Cytometry](#)
- [Cell Culture](#)

SPANXE Antibody (Center) - Images



SPANXE Antibody (Center) (Cat. #AP19072c) western blot analysis in HepG2 cell line lysates (35ug/lane). This demonstrates the SPANXE antibody detected the SPANXE protein (arrow).

SPANXE Antibody (Center) - Background

Temporally regulated transcription and translation of several testis-specific genes is required to initiate the series of molecular and morphological changes in the male germ cell lineage necessary for the formation of mature spermatozoa. This gene is a member of the SPANX family of cancer/testis-associated genes, which are located in a cluster on chromosome X. The SPANX genes encode differentially expressed testis-specific proteins that localize to various subcellular compartments. This particular gene encodes a sperm protein that contains a consensus nuclear localization signal but, although a role in spermatogenesis is suggested, the specific function of this family member has not yet been determined.

SPANXE Antibody (Center) - References

Hansen, S., et al. Syst Biol Reprod Med 55, 18-26 (2010) :
Kouprina, N., et al. Genome Res. 15(11):1477-1486(2005)
Zendman, A.J., et al. Gene 309(2):125-133(2003)
Westbrook, V.A., et al. Biol. Reprod. 64(1):345-358(2001)