

SPESP1 Antibody (C-term)
Affinity Purified Rabbit Polyclonal Antibody (Pab)
Catalog # AP19073b**Specification**

SPESP1 Antibody (C-term) - Product Information

Application	WB,E
Primary Accession	Q6UW49
Other Accession	NP_663633.1
Reactivity	Human
Host	Rabbit
Clonality	Polyclonal
Isotype	Rabbit IgG
Calculated MW	38931
Antigen Region	236-262

SPESP1 Antibody (C-term) - Additional Information**Gene ID** 246777**Other Names**

Sperm equatorial segment protein 1, ESP, Equatorial segment protein, SP-ESP, Glycosylated 38 kDa sperm protein C-7/8, SPESP1

Target/Specificity

This SPESP1 antibody is generated from rabbits immunized with a KLH conjugated synthetic peptide between 236-262 amino acids from the C-terminal region of human SPESP1.

Dilution

WB~~1:1000

E~~Use at an assay dependent concentration.

Format

Purified polyclonal antibody supplied in PBS with 0.09% (W/V) sodium azide. This antibody is purified through a protein A column, followed by peptide affinity purification.

Storage

Maintain refrigerated at 2-8°C for up to 2 weeks. For long term storage store at -20°C in small aliquots to prevent freeze-thaw cycles.

Precautions

SPESP1 Antibody (C-term) is for research use only and not for use in diagnostic or therapeutic procedures.

SPESP1 Antibody (C-term) - Protein Information**Name** SPESP1 ([HGNC:15570](#))

Function Involved in fertilization ability of sperm.

Cellular Location

Cytoplasmic vesicle, secretory vesicle, acrosome. Note=Small proacrosomal granules (during the Golgi phase), enlarged acrosomal vesicles (during the cap phase), acrosome (during the elongating phase), equatorial segment of the acrosome (during the maturation phase) (PubMed:12773409). After acrosome reaction localizes to the equatorial segment region in both noncapacitated and capacitated, acrosome-reacted sperm (By similarity) {ECO:0000250|UniProtKB:Q9D5A0, ECO:0000269|PubMed:12773409}

Tissue Location

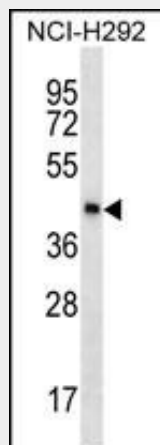
Highly expressed in testis, where it is localized in the acrosome of postmeiotic stages of spermiogenesis (round and elongating spermatids and in ejaculated spermatozoa) (at protein level). Poorly expressed in placenta and fetal lung

SPESP1 Antibody (C-term) - Protocols

Provided below are standard protocols that you may find useful for product applications.

- [Western Blot](#)
- [Blocking Peptides](#)
- [Dot Blot](#)
- [Immunohistochemistry](#)
- [Immunofluorescence](#)
- [Immunoprecipitation](#)
- [Flow Cytometry](#)
- [Cell Culture](#)

SPESP1 Antibody (C-term) - Images



SPESP1 Antibody (C-term) (Cat. #AP19073b) western blot analysis in NCI-H292 cell line lysates (35ug/lane). This demonstrates the SPESP1 antibody detected the SPESP1 protein (arrow).

SPESP1 Antibody (C-term) - Background

The encoded protein is a human alloantigen involved in sperm-egg binding and fusion.

SPESP1 Antibody (C-term) - References

Wolkowicz, M.J., et al. J. Androl. 29(3):272-282(2008)
Lamesch, P., et al. Genomics 89(3):307-315(2007)
Wolkowicz, M.J., et al. Biol. Reprod. 69(3):735-745(2003)