

**SURF6 Antibody (Center)**  
**Affinity Purified Rabbit Polyclonal Antibody (Pab)**  
**Catalog # AP19078c**

**Specification**

---

**SURF6 Antibody (Center) - Product Information**

Application	WB,E
Primary Accession	<a href="#">O75683</a>
Other Accession	<a href="#">NP_006744.2</a>
Reactivity	Human
Host	Rabbit
Clonality	Polyclonal
Isotype	Rabbit IgG
Calculated MW	41450
Antigen Region	187-213

**SURF6 Antibody (Center) - Additional Information**

**Gene ID** 6838

**Other Names**

Surfeit locus protein 6, SURF6, SURF-6

**Target/Specificity**

This SURF6 antibody is generated from rabbits immunized with a KLH conjugated synthetic peptide between 187-213 amino acids from the Central region of human SURF6.

**Dilution**

WB~~1:1000

**Format**

Purified polyclonal antibody supplied in PBS with 0.09% (W/V) sodium azide. This antibody is purified through a protein A column, followed by peptide affinity purification.

**Storage**

Maintain refrigerated at 2-8°C for up to 2 weeks. For long term storage store at -20°C in small aliquots to prevent freeze-thaw cycles.

**Precautions**

SURF6 Antibody (Center) is for research use only and not for use in diagnostic or therapeutic procedures.

**SURF6 Antibody (Center) - Protein Information**

**Name** SURF6

**Synonyms** SURF-6

**Function** Binds to both DNA and RNA in vitro, with a stronger binding capacity for RNA. May represent a nucleolar constitutive protein involved in ribosomal biosynthesis or assembly (By similarity).

**Cellular Location**

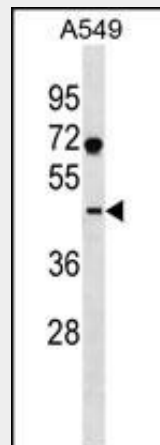
Nucleus, nucleoplasm. Nucleus, nucleolus. Note=Granular component of the nucleolus

**SURF6 Antibody (Center) - Protocols**

Provided below are standard protocols that you may find useful for product applications.

- [Western Blot](#)
- [Blocking Peptides](#)
- [Dot Blot](#)
- [Immunohistochemistry](#)
- [Immunofluorescence](#)
- [Immunoprecipitation](#)
- [Flow Cytometry](#)
- [Cell Culture](#)

**SURF6 Antibody (Center) - Images**



SURF6 Antibody (Center) (Cat. #AP19078c) western blot analysis in A549 cell line lysates (35ug/lane). This demonstrates the SURF6 antibody detected the SURF6 protein (arrow).

**SURF6 Antibody (Center) - Background**

This gene is located in the surfeit gene cluster, a group of very tightly linked genes that do not share sequence similarity. The gene demonstrates features of a housekeeping gene, being ubiquitously expressed, and the encoded protein has been localized to the nucleolus. The protein includes motifs found in both the mouse and fish orthologs, which suggests a putative function as a nucleolar-matrix protein with nucleic acid-binding properties, based on characteristics determined in mouse.

**SURF6 Antibody (Center) - References**

Polzikov, M., et al. Biochem. Biophys. Res. Commun. 327(1):143-149(2005)  
Andersen, J.S., et al. Nature 433(7021):77-83(2005)

Angiolillo, A., et al. Gene 284 (1-2), 169-178 (2002) :  
Andersen, J.S., et al. Curr. Biol. 12(1):1-11(2002)  
Magoulas, C., et al. Gene 243 (1-2), 115-123 (2000) :