

TAS2R3 Antibody (C-term)
Affinity Purified Rabbit Polyclonal Antibody (Pab)
Catalog # AP19081b

Specification

TAS2R3 Antibody (C-term) - Product Information

Application	WB,E
Primary Accession	O9NYW6
Other Accession	NP_058639.1
Reactivity	Human
Host	Rabbit
Clonality	Polyclonal
Isotype	Rabbit IgG
Calculated MW	35915
Antigen Region	287-313

TAS2R3 Antibody (C-term) - Additional Information

Gene ID 50831

Other Names

Taste receptor type 2 member 3, T2R3, TAS2R3

Target/Specificity

This TAS2R3 antibody is generated from rabbits immunized with a KLH conjugated synthetic peptide between 287-313 amino acids from the C-terminal region of human TAS2R3.

Dilution

WB~~1:1000

E~~Use at an assay dependent concentration.

Format

Purified polyclonal antibody supplied in PBS with 0.09% (W/V) sodium azide. This antibody is purified through a protein A column, followed by peptide affinity purification.

Storage

Maintain refrigerated at 2-8°C for up to 2 weeks. For long term storage store at -20°C in small aliquots to prevent freeze-thaw cycles.

Precautions

TAS2R3 Antibody (C-term) is for research use only and not for use in diagnostic or therapeutic procedures.

TAS2R3 Antibody (C-term) - Protein Information

Name TAS2R3

Function Gustducin-coupled receptor implicated in the perception of bitter compounds in the oral

cavity and the gastrointestinal tract. Signals through PLCB2 and the calcium-regulated cation channel TRPM5.

Cellular Location

Membrane; Multi-pass membrane protein.

Tissue Location

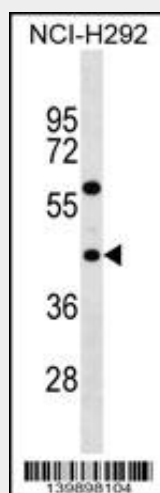
Expressed in subsets of taste receptor cells of the tongue and palate epithelium and exclusively in gustducin-positive cells. Expressed in the antrum and fundus (part of the stomach), duodenum and in gastric endocrine cells.

TAS2R3 Antibody (C-term) - Protocols

Provided below are standard protocols that you may find useful for product applications.

- [Western Blot](#)
- [Blocking Peptides](#)
- [Dot Blot](#)
- [Immunohistochemistry](#)
- [Immunofluorescence](#)
- [Immunoprecipitation](#)
- [Flow Cytometry](#)
- [Cell Culture](#)

TAS2R3 Antibody (C-term) - Images



TAS2R3 Antibody (C-term) (Cat. #AP19081b) western blot analysis in NCI-H292 cell line lysates (35ug/lane). This demonstrates the TAS2R3 antibody detected the TAS2R3 protein (arrow).

TAS2R3 Antibody (C-term) - Background

This gene encodes a member of a family of candidate taste receptors that are members of the G protein-coupled receptor superfamily and that are specifically expressed by taste receptor cells of the tongue and palate epithelia. These apparently intronless taste receptor genes encode a 7-transmembrane receptor protein, functioning as a bitter taste receptor. This gene is clustered with another 3 candidate taste receptor genes in chromosome 7 and is genetically linked to loci that influence

bitter perception.

TAS2R3 Antibody (C-term) - References

Calvo, S.E., et al. Proc. Natl. Acad. Sci. U.S.A. 106(18):7507-7512(2009)
Go, Y., et al. Genetics 170(1):313-326(2005)
Fischer, A., et al. Mol. Biol. Evol. 22(3):432-436(2005)
Zhang, Y., et al. Cell 112(3):293-301(2003)
Montmayeur, J.P., et al. Curr. Opin. Neurobiol. 12(4):366-371(2002)