

UBAP2L Antibody (Center)
Affinity Purified Rabbit Polyclonal Antibody (Pab)
Catalog # AP19097c**Specification**

UBAP2L Antibody (Center) - Product Information

Application	WB,E
Primary Accession	Q14157
Other Accession	Q80X50 , NP_001120792.1
Reactivity	Human
Predicted	Mouse
Host	Rabbit
Clonality	Polyclonal
Isotype	Rabbit IgG
Calculated MW	114535
Antigen Region	575-601

UBAP2L Antibody (Center) - Additional Information**Gene ID** 9898**Other Names**

Ubiquitin-associated protein 2-like, Protein NICE-4, UBAP2L, KIAA0144, NICE4

Target/Specificity

This UBAP2L antibody is generated from rabbits immunized with a KLH conjugated synthetic peptide between 575-601 amino acids from the Central region of human UBAP2L.

Dilution

WB~~1:1000

E~~Use at an assay dependent concentration.

Format

Purified polyclonal antibody supplied in PBS with 0.09% (W/V) sodium azide. This antibody is purified through a protein A column, followed by peptide affinity purification.

Storage

Maintain refrigerated at 2-8°C for up to 2 weeks. For long term storage store at -20°C in small aliquots to prevent freeze-thaw cycles.

Precautions

UBAP2L Antibody (Center) is for research use only and not for use in diagnostic or therapeutic procedures.

UBAP2L Antibody (Center) - Protein Information**Name** UBAP2L ([HGNC:29877](#))

Synonyms KIAA0144, NICE4

Function Recruits the ubiquitination machinery to RNA polymerase II for polyubiquitination, removal and degradation, when the transcription-coupled nucleotide excision repair (TC-NER) machinery fails to resolve DNA damage (PubMed:[35633597](#)). Plays an important role in the activity of long-term repopulating hematopoietic stem cells (LT- HSCs) (By similarity). Is a regulator of stress granule assembly, required for their efficient formation (PubMed:[29395067](#), PubMed:[35977029](#)). Required for proper brain development and neocortex lamination (By similarity).

Cellular Location

Nucleus. Chromosome. Cytoplasm Cytoplasm, Stress granule Note=Associates with nuclear chromatin.

Tissue Location

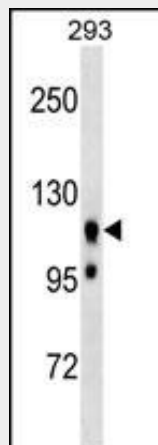
Ubiquitous..

UBAP2L Antibody (Center) - Protocols

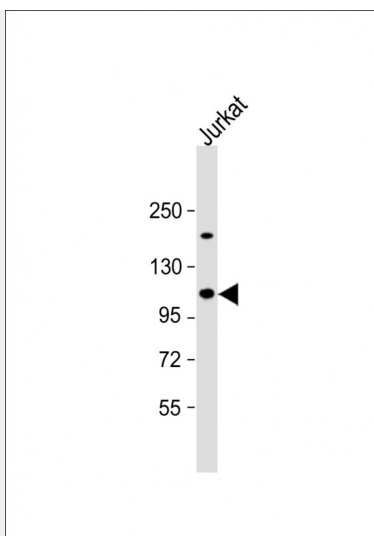
Provided below are standard protocols that you may find useful for product applications.

- [Western Blot](#)
- [Blocking Peptides](#)
- [Dot Blot](#)
- [Immunohistochemistry](#)
- [Immunofluorescence](#)
- [Immunoprecipitation](#)
- [Flow Cytometry](#)
- [Cell Culture](#)

UBAP2L Antibody (Center) - Images



UBAP2L Antibody (Center) (Cat. #AP19097c) western blot analysis in 293 cell line lysates (35ug/lane). This demonstrates the UBAP2L antibody detected the UBAP2L protein (arrow).



Anti-UBAP2L Antibody (Center) at 1:1000 dilution + Jurkat whole cell lysate Lysates/proteins at 20 µg per lane. Secondary Goat Anti-Rabbit IgG, (H+L), Peroxidase conjugated at 1/10000 dilution. Predicted band size : 115 kDa Blocking/Dilution buffer: 5% NFDm/TBST.

UBAP2L Antibody (Center) - Background

UBAP2L contains 1 UBA domain and has 3 named isoforms. UBA domains are a commonly occurring sequence motif of approximately 45 amino acid residues that are found in diverse proteins involved in the ubiquitin/proteasome pathway, DNA excision-repair, and cell signalling via protein kinases. The function of this protein is not known.

UBAP2L Antibody (Center) - References

Ichikawa, S., et al. J. Bone Miner. Res. 25(8):1821-1829(2010)
Davila, S., et al. Genes Immun. 11(3):232-238(2010)
Wang, Y.L., et al. J. Biol. Chem. 283(49):33808-33815(2008)
Olsen, J.V., et al. Cell 127(3):635-648(2006)
Beausoleil, S.A., et al. Nat. Biotechnol. 24(10):1285-1292(2006)