

WRNIP1 Antibody (N-term)
Affinity Purified Rabbit Polyclonal Antibody (Pab)
Catalog # AP19098a**Specification**

WRNIP1 Antibody (N-term) - Product Information

Application	WB,E
Primary Accession	O96S55
Other Accession	O8CG07 , O91XU0 , NP_064520.2
Reactivity	Human
Predicted	Mouse, Rat
Host	Rabbit
Clonality	Polyclonal
Isotype	Rabbit IgG
Calculated MW	72133
Antigen Region	1-30

WRNIP1 Antibody (N-term) - Additional Information**Gene ID** 56897**Other Names**

ATPase WRNIP1, Werner helicase-interacting protein 1, WRNIP1 (HGNC:20876)

Target/Specificity

This WRNIP1 antibody is generated from rabbits immunized with a KLH conjugated synthetic peptide between 1-30 amino acids from the N-terminal region of human WRNIP1.

Dilution

WB~~1:1000

E~~Use at an assay dependent concentration.

Format

Purified polyclonal antibody supplied in PBS with 0.09% (W/V) sodium azide. This antibody is purified through a protein A column, followed by peptide affinity purification.

Storage

Maintain refrigerated at 2-8°C for up to 2 weeks. For long term storage store at -20°C in small aliquots to prevent freeze-thaw cycles.

Precautions

WRNIP1 Antibody (N-term) is for research use only and not for use in diagnostic or therapeutic procedures.

WRNIP1 Antibody (N-term) - Protein Information

Name WRNIP1 ([HGNC:20876](#))

Function Functions as a modulator of initiation or reinitiation events during DNA polymerase delta-mediated DNA synthesis. In the presence of ATP, stimulation of DNA polymerase delta-mediated DNA synthesis is decreased. Also plays a role in the innate immune defense against viruses. Stabilizes the RIGI dsRNA interaction and promotes RIGI 'Lys- 63'-linked polyubiquitination. In turn, RIGI transmits the signal through mitochondrial MAVS.

Cellular Location

Nucleus. Cytoplasm. Note=Colocalizes with WRN in granular structures in the nucleus.

Tissue Location

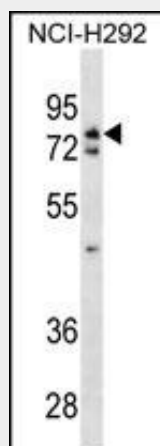
Ubiquitously expressed.

WRNIP1 Antibody (N-term) - Protocols

Provided below are standard protocols that you may find useful for product applications.

- [Western Blot](#)
- [Blocking Peptides](#)
- [Dot Blot](#)
- [Immunohistochemistry](#)
- [Immunofluorescence](#)
- [Immunoprecipitation](#)
- [Flow Cytometry](#)
- [Cell Culture](#)

WRNIP1 Antibody (N-term) - Images



WRNIP1 Antibody (N-term) (Cat. #AP19098a) western blot analysis in NCI-H292 cell line lysates (35ug/lane). This demonstrates the WRNIP1 antibody detected the WRNIP1 protein (arrow).

WRNIP1 Antibody (N-term) - Background

Werner's syndrome is a rare autosomal recessive disorder characterized by premature aging. The protein encoded by this gene interacts with the N-terminal portion of Werner protein containing the exonuclease domain. This protein shows homology to replication factor C family proteins, and is conserved from E. coli to human. Studies in yeast suggest that this gene may influence the aging

process. Two transcript variants encoding different isoforms have been isolated for this gene.

WRNIP1 Antibody (N-term) - References

Kaur, S., et al. Cell Cycle 9(15):3106-3111(2010)
Yoshimura, A., et al. Genes Genet. Syst. 84(2):171-178(2009)
Crosetto, N., et al. J. Biol. Chem. 283(50):35173-35185(2008)
Mano, Y., et al. Cancer Sci. 98(12):1902-1913(2007)
Bish, R.A., et al. J. Biol. Chem. 282(32):23184-23193(2007)