

YR011 Antibody (Center)
Affinity Purified Rabbit Polyclonal Antibody (Pab)
Catalog # AP19099c

Specification

YR011 Antibody (Center) - Product Information

| | |
|-------------------|------------------------|
| Application | WB,E |
| Primary Accession | A6NHP6 |
| Reactivity | Human |
| Host | Rabbit |
| Clonality | Polyclonal |
| Isotype | Rabbit IgG |
| Antigen Region | 164-190 |

YR011 Antibody (Center) - Additional Information

Other Names

NP1P-like protein ENSP00000283050

Target/Specificity

This YR011 antibody is generated from rabbits immunized with a KLH conjugated synthetic peptide between 164-190 amino acids from the Central region of human YR011.

Dilution

WB~~1:1000

E~~Use at an assay dependent concentration.

Format

Purified polyclonal antibody supplied in PBS with 0.09% (W/V) sodium azide. This antibody is purified through a protein A column, followed by peptide affinity purification.

Storage

Maintain refrigerated at 2-8°C for up to 2 weeks. For long term storage store at -20°C in small aliquots to prevent freeze-thaw cycles.

Precautions

YR011 Antibody (Center) is for research use only and not for use in diagnostic or therapeutic procedures.

YR011 Antibody (Center) - Protein Information

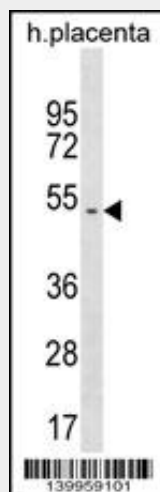
YR011 Antibody (Center) - Protocols

Provided below are standard protocols that you may find useful for product applications.

- [Western Blot](#)

- [Blocking Peptides](#)
- [Dot Blot](#)
- [Immunohistochemistry](#)
- [Immunofluorescence](#)
- [Immunoprecipitation](#)
- [Flow Cytometry](#)
- [Cell Culture](#)

YR011 Antibody (Center) - Images



YR011 Antibody (Center) (Cat. #AP19099c) western blot analysis in human placenta tissue lysates (35ug/lane). This demonstrates the YR011 antibody detected the YR011 protein (arrow).

YR011 Antibody (Center) - Background

The function of this protein remains unknown.