

**RFC1 Antibody (N-term)**  
**Affinity Purified Rabbit Polyclonal Antibody (Pab)**  
**Catalog # AP19110a****Specification**

---

**RFC1 Antibody (N-term) - Product Information**

Application	WB,E
Primary Accession	<a href="#">P35251</a>
Other Accession	<a href="#">NP_002904.3</a>
Reactivity	Human
Host	Rabbit
Clonality	Polyclonal
Isotype	Rabbit IgG
Calculated MW	128255
Antigen Region	26-54

**RFC1 Antibody (N-term) - Additional Information****Gene ID** 5981**Other Names**

Replication factor C subunit 1, Activator 1 140 kDa subunit, A1 140 kDa subunit, Activator 1 large subunit, Activator 1 subunit 1, DNA-binding protein PO-GA, Replication factor C 140 kDa subunit, RF-C 140 kDa subunit, RFC140, Replication factor C large subunit, RFC1, RFC140

**Target/Specificity**

This RFC1 antibody is generated from rabbits immunized with a KLH conjugated synthetic peptide between 26-54 amino acids from the N-terminal region of human RFC1.

**Dilution**

WB~~1:1000

E~~Use at an assay dependent concentration.

**Format**

Purified polyclonal antibody supplied in PBS with 0.09% (W/V) sodium azide. This antibody is purified through a protein A column, followed by peptide affinity purification.

**Storage**

Maintain refrigerated at 2-8°C for up to 2 weeks. For long term storage store at -20°C in small aliquots to prevent freeze-thaw cycles.

**Precautions**

RFC1 Antibody (N-term) is for research use only and not for use in diagnostic or therapeutic procedures.

**RFC1 Antibody (N-term) - Protein Information****Name** RFC1

## Synonyms RFC140

**Function** Subunit of the replication factor C (RFC) complex which acts during elongation of primed DNA templates by DNA polymerases delta and epsilon, and is necessary for ATP-dependent loading of proliferating cell nuclear antigen (PCNA) onto primed DNA (PubMed:[9488738](#)). This subunit binds to the primer-template junction. Binds the PO-B transcription element as well as other GA rich DNA sequences. Can bind single- or double-stranded DNA.

## Cellular Location

Nucleus.

## Tissue Location

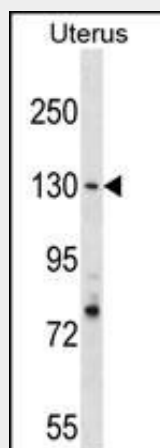
Wide tissue distribution. Undetectable in placental tissue

## RFC1 Antibody (N-term) - Protocols

Provided below are standard protocols that you may find useful for product applications.

- [Western Blot](#)
- [Blocking Peptides](#)
- [Dot Blot](#)
- [Immunohistochemistry](#)
- [Immunofluorescence](#)
- [Immunoprecipitation](#)
- [Flow Cytometry](#)
- [Cell Culture](#)

## RFC1 Antibody (N-term) - Images



RFC1 Antibody (N-term) (Cat. #AP19110a) western blot analysis in Uterus tissue lysates (35ug/lane). This demonstrates the RFC1 antibody detected the RFC1 protein (arrow).

## RFC1 Antibody (N-term) - Background

The protein encoded by this gene is the large subunit of replication factor C, which is a five subunit DNA polymerase accessory protein. Replication factor C is a DNA-dependent ATPase that is required for eukaryotic DNA replication and repair. The protein acts as an activator of DNA polymerases, binds to the 3' end of primers, and promotes coordinated synthesis of both strands. It also may have a role in telomere stability. [provided by RefSeq].

**RFC1 Antibody (N-term) - References**

Overmeer, R.M., et al. Mol. Cell. Biol. 30(20):4828-4839(2010) Bailey, S.D., et al. Diabetes Care 33(10):2250-2253(2010) Arora, M., et al. Leukemia 24(8):1470-1475(2010) Galbiatti, A.L., et al. Mol. Biol. Rep. (2010) In press : Jugessur, A., et al. PLoS ONE 5 (7), E11493 (2010) :