

IL22RA1 Antibody (C-term)
Affinity Purified Rabbit Polyclonal Antibody (Pab)
Catalog # AP19114b**Specification**

IL22RA1 Antibody (C-term) - Product Information

Application	WB,E
Primary Accession	Q8N6P7
Other Accession	NP_067081.2
Reactivity	Human
Host	Rabbit
Clonality	Polyclonal
Isotype	Rabbit IgG
Antigen Region	408-436

IL22RA1 Antibody (C-term) - Additional Information**Gene ID** 58985**Other Names**

Interleukin-22 receptor subunit alpha-1, IL-22 receptor subunit alpha-1, IL-22R-alpha-1, IL-22RA1, Cytokine receptor class-II member 9, Cytokine receptor family 2 member 9, CRF2-9, ZcytoR11, IL22RA1, IL22R

Target/Specificity

This IL22RA1 antibody is generated from rabbits immunized with a KLH conjugated synthetic peptide between 408-436 amino acids from the C-terminal region of human IL22RA1.

Dilution

WB~~1:1000

E~~Use at an assay dependent concentration.

Format

Purified polyclonal antibody supplied in PBS with 0.09% (W/V) sodium azide. This antibody is purified through a protein A column, followed by peptide affinity purification.

Storage

Maintain refrigerated at 2-8°C for up to 2 weeks. For long term storage store at -20°C in small aliquots to prevent freeze-thaw cycles.

Precautions

IL22RA1 Antibody (C-term) is for research use only and not for use in diagnostic or therapeutic procedures.

IL22RA1 Antibody (C-term) - Protein Information**Name** IL22RA1

Synonyms IL22R

Function Component of the receptor for IL20, IL22 and IL24. Component of IL22 receptor formed by IL22RA1 and IL10RB enabling IL22 signaling via JAK/STAT pathways. IL22 also induces activation of MAPK1/MAPK3 and Akt kinases pathways. Component of one of the receptor for IL20 and IL24 formed by IL22RA1 and IL20RB also signaling through STATs activation. Mediates IL24 antiangiogenic activity as well as IL24 inhibitory effect on endothelial cell tube formation and differentiation.

Cellular Location

Cell membrane; Single-pass type I membrane protein

Tissue Location

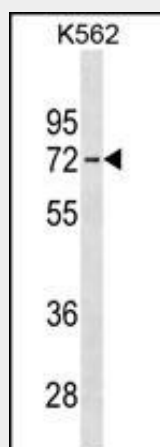
Expressed in colon, liver, lung, pancreas and kidney. No expression in immune cells such as monocytes, T-cells, and NK-cells. Expressed in keratinocytes of normal skin as well as in psoriatic skin lesion. Detected in normal blood brain barrier endothelial cells as well as in multiple sclerosis lesions; Strongly expressed on central nervous system vessels within infiltrated multiple sclerosis lesions. Overexpressed in synovial fluid cells from rheumatoid arthritis and spondyloarthropathy patients

IL22RA1 Antibody (C-term) - Protocols

Provided below are standard protocols that you may find useful for product applications.

- [Western Blot](#)
- [Blocking Peptides](#)
- [Dot Blot](#)
- [Immunohistochemistry](#)
- [Immunofluorescence](#)
- [Immunoprecipitation](#)
- [Flow Cytometry](#)
- [Cell Culture](#)

IL22RA1 Antibody (C-term) - Images



IL22RA1 Antibody (C-term) (Cat. #AP19114b) western blot analysis in K562 cell line lysates (35ug/lane). This demonstrates the IL22RA1 antibody detected the IL22RA1 protein (arrow).

IL22RA1 Antibody (C-term) - Background

The protein encoded by this gene belongs to the class II cytokine receptor family, and has been shown to be a receptor for interleukin 22 (IL22). IL22 receptor is a protein complex that consists of this protein and interleukin 10 receptor, beta (IL10BR/CRFB4), a subunit also shared by the receptor complex for interleukin 10 (IL10). This gene and interleukin 28 receptor, alpha (IL28RA) form a cytokine receptor gene cluster in the chromosomal region 1p36.

IL22RA1 Antibody (C-term) - References

Meng, S., et al. J Mol Cell Biol 2(4):223-230(2010)
Davila, S., et al. Genes Immun. 11(3):232-238(2010)
Tohyama, M., et al. Eur. J. Immunol. 39(10):2779-2788(2009)
Dumoutier, L., et al. J. Biol. Chem. 284(39):26377-26384(2009)
Zhu, H., et al. HBPD INT 8(4):402-406(2009)