

PES1 Antibody (C-term)
Affinity Purified Rabbit Polyclonal Antibody (Pab)
Catalog # AP19122b

Specification

PES1 Antibody (C-term) - Product Information

Application	WB,E
Primary Accession	O00541
Other Accession	NP_055118.1
Reactivity	Human
Host	Rabbit
Clonality	Polyclonal
Isotype	Rabbit IgG
Calculated MW	68003
Antigen Region	549-578

PES1 Antibody (C-term) - Additional Information

Gene ID 23481

Other Names

Pescadillo homolog {ECO:0000255|HAMAP-Rule:MF_03028}, PES1
{ECO:0000255|HAMAP-Rule:MF_03028}

Target/Specificity

This PES1 antibody is generated from rabbits immunized with a KLH conjugated synthetic peptide between 549-578 amino acids from the C-terminal region of human PES1.

Dilution

WB~~1:1000

E~~Use at an assay dependent concentration.

Format

Purified polyclonal antibody supplied in PBS with 0.09% (W/V) sodium azide. This antibody is purified through a protein A column, followed by peptide affinity purification.

Storage

Maintain refrigerated at 2-8°C for up to 2 weeks. For long term storage store at -20°C in small aliquots to prevent freeze-thaw cycles.

Precautions

PES1 Antibody (C-term) is for research use only and not for use in diagnostic or therapeutic procedures.

PES1 Antibody (C-term) - Protein Information

Name PES1 {ECO:0000255|HAMAP-Rule:MF_03028}

Function Component of the PeBoW complex, which is required for maturation of 28S and 5.8S ribosomal RNAs and formation of the 60S ribosome.

Cellular Location

Nucleus, nucleolus. Nucleus, nucleoplasm. Chromosome. Note=Appears to localize to the periphery of metaphase chromosomes during mitosis and to the prenucleolar bodies that form in mitotic cells prior to the actual nucleoli. {ECO:0000255|HAMAP- Rule:MF_03028}

Tissue Location

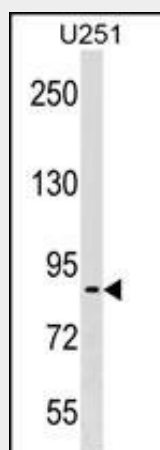
Significant levels are detected in a variety of cancer cell lines, including glioblastoma, breast carcinoma, colon carcinoma and cervical carcinoma cells. Levels are abnormally elevated in malignant tumors of astrocytic origin

PES1 Antibody (C-term) - Protocols

Provided below are standard protocols that you may find useful for product applications.

- [Western Blot](#)
- [Blocking Peptides](#)
- [Dot Blot](#)
- [Immunohistochemistry](#)
- [Immunofluorescence](#)
- [Immunoprecipitation](#)
- [Flow Cytometry](#)
- [Cell Culture](#)

PES1 Antibody (C-term) - Images



PES1 Antibody (C-term) (Cat. #AP19122b) western blot analysis in U251 cell line lysates (35ug/lane). This demonstrates the PES1 antibody detected the PES1 protein (arrow).

PES1 Antibody (C-term) - Background

This gene encodes a protein that is abnormally elevated in malignant tumors of astrocytic origin. It is a strongly conserved gene containing a BRCT domain that is essential for the activity of this gene product. The gene plays a crucial role in cell proliferation and may be necessary for oncogenic transformation and tumor progression.

PES1 Antibody (C-term) - References

Zhang, J., et al. Acta Biochim. Biophys. Sin. (Shanghai) 41(12):991-997(2009)
Li, J., et al. Cancer Sci. 100(12):2255-2260(2009)
Rikova, K., et al. Cell 131(6):1190-1203(2007)
Rohrmoser, M., et al. Mol. Cell. Biol. 27(10):3682-3694(2007)
Grimm, T., et al. Nucleic Acids Res. 34(10):3030-3043(2006)