

BCL2L12 Antibody (N-term)
Affinity Purified Rabbit Polyclonal Antibody (Pab)
Catalog # AP19139a**Specification**

BCL2L12 Antibody (N-term) - Product Information

Application	WB,E
Primary Accession	O9HB09
Other Accession	NP_001035758.1
Reactivity	Human
Host	Rabbit
Clonality	Polyclonal
Isotype	Rabbit IgG
Calculated MW	26908
Antigen Region	19-45

BCL2L12 Antibody (N-term) - Additional Information**Gene ID** 83596**Other Names**

Bcl-2-like protein 12, Bcl2-L-12, Bcl-2-related proline-rich protein, BCL2L12, BPR

Target/Specificity

This BCL2L12 antibody is generated from rabbits immunized with a KLH conjugated synthetic peptide between 19-45 amino acids from the N-terminal region of human BCL2L12.

Dilution

WB~~1:1000

E~~Use at an assay dependent concentration.

Format

Purified polyclonal antibody supplied in PBS with 0.09% (W/V) sodium azide. This antibody is purified through a protein A column, followed by peptide affinity purification.

Storage

Maintain refrigerated at 2-8°C for up to 2 weeks. For long term storage store at -20°C in small aliquots to prevent freeze-thaw cycles.

Precautions

BCL2L12 Antibody (N-term) is for research use only and not for use in diagnostic or therapeutic procedures.

BCL2L12 Antibody (N-term) - Protein Information**Name** BCL2L12 ([HGNC:13787](#))**Synonyms** BPR

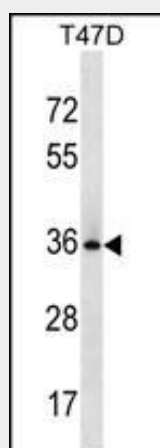
Tissue Location

Expressed mainly in breast, thymus, prostate, fetal liver, colon, placenta, pancreas, small intestine, spinal cord, kidney, and bone marrow and to a lesser extent in many other tissues. Isoform 2 is primarily expressed in skeletal muscle

BCL2L12 Antibody (N-term) - Protocols

Provided below are standard protocols that you may find useful for product applications.

- [Western Blot](#)
- [Blocking Peptides](#)
- [Dot Blot](#)
- [Immunohistochemistry](#)
- [Immunofluorescence](#)
- [Immunoprecipitation](#)
- [Flow Cytometry](#)
- [Cell Culture](#)

BCL2L12 Antibody (N-term) - Images

BCL2L12 Antibody (N-term) (Cat. #AP19139a) western blot analysis in T47D cell line lysates (35ug/lane). This demonstrates the BCL2L12 antibody detected the BCL2L12 protein (arrow).

BCL2L12 Antibody (N-term) - Background

The protein encoded by this gene belongs to the BCL-2 protein family. BCL-2 family members form hetero- or homodimers and act as anti- or pro-apoptotic regulators that are involved in a wide variety of cellular activities. This protein contains a Bcl-2 homology domain 2 (BH2). The function of this gene has not yet been determined. Two alternatively spliced transcript variants of this gene encoding distinct isoforms have been reported. [provided by RefSeq].

BCL2L12 Antibody (N-term) - References

Bailey, S.D., et al. Diabetes Care 33(10):2250-2253(2010)
Florou, D., et al. Biochem. Biophys. Res. Commun. 391(1):214-218(2010)
Hong, Y., et al. Mol. Cell. Biochem. 333 (1-2), 323-330 (2010) :
Talmud, P.J., et al. Am. J. Hum. Genet. 85(5):628-642(2009)

Thomadaki, H., et al. Ann. N. Y. Acad. Sci. 1171, 276-283 (2009) :